

foundation focus

VOLUME 14 | MARCH 2012



Into the Blue

A life saved through cardiac care PAGE 8

2 Susquehanna Tower
Designed for the Best
Patient Outcomes



12 Donors Celebrate the
Success of Project 2012



24 2011 Foundation
Impact Report



35 Local Artists' Work
Enriches Project 2012



SusquehannaHealth.org/Giving

 Susquehanna Health
Foundation

 facebook.com/SusquehannaHealth


 twitter.com/SusqueHealth

 youtube.com/SusquehannaHealth

SUSQUEHANNA TOWER



Forward-thinking design combined with new technology, materials and standards helped Susquehanna Health create the new patient-centered and family-focused spaces within Susquehanna Tower at Williamsport Regional Medical Center.



designed

for the best patient outcomes

Design can influence health. Based on experience, evidence-based designs from other facilities and feedback from patients, Susquehanna Health planned the new healing environment with architects from Stantec, Inc. For the best patient outcomes, they wanted the space to support infection prevention measures and a new decentralized nursing model. They also wanted the design to include elements from nature, to create minimal noise and interruption to sleep, and to foster family interaction and support. The design also needed to help staff be efficient, take advantage of technology and improve communication.

Providing private patient rooms, an infection prevention measure that also protects patient confidentiality, was a priority. Creating space for family members in those rooms was key.

“We want to be patient-centered and family-focused. By honoring the family relationship, we can build a strong support system for the patient, and data shows there is improved care when these relationships are strong,” explains **Sue Duchman**, Susquehanna Health’s Vice President and Chief Nursing Officer, who led the design team from the patient

care side. “The intentional inclusion of family space combined with the decentralized nursing model, which puts nurses in close proximity to our patients to provide care and education, helps build that support, so we are never caring for a patient without consideration of the rest of the family.”

Challenged to bring form to so many functions, architects provided the solution with a floor layout that resembles a butterfly. Two extended wings provide ample space and access to natural light for patient, family and staff areas. The center houses supplies as well as “backstage” hallways and elevators to allow essential activities such as housekeeping and restocking to occur while main hallways remain quieter and less cluttered.

“The highlight for me is that we were able to meet the challenge of modernizing the facility to provide for a progressive patient care model while remaining in the city and using that location to its full advantage,” says **Collin Beers**, principal and architect at Stantec.

Within the innovative framework, staff and architects planned individual patient care units, designing the hallways and patient rooms to support the best patient outcomes.

nursing stations



nursing
touchdown
station

New technology for record-keeping and communication eliminated the need for a central nursing station. The iconic hub is replaced with small nursing stations strategically placed adjacent to patient rooms. These stations, where nurses quietly update documentation or place lab orders, provide a generous work surface, computer, wall phone and direct view of the patient. Elimination of repeated trips to a central station, in addition to the location of safe storage for supplies and medicines throughout the unit, saves steps and improves efficiency. This additional time and improved access enables nurses to help patients and family caregivers prepare for the patients' discharge by teaching and supervising practice of skills they might need to continue safe care at home.

Research has shown that a quiet nursing environment allows for clear communication and error reduction. It also provides for restful recovery and improved healing for the patient. When fewer people are involved in common conversations, the result is a reduced noise level.

additional safety measures

A universal design helps caregivers quickly orient to the patient rooms. Materials, supplies, call buttons and equipment are always placed in the same position in relation to the patient. A handrail on the wall gives patients support for independent or assisted trips to the bathroom, where the door opens outwards for easier access and safety. Many rooms include lifts to prevent patient falls or injury to staff assisting patients.





patient rooms

Private patient rooms offer many compelling advantages. With only one patient in each room, reduced activity means fewer interruptions so patients can sleep. When assigning rooms, concerns about gender and condition of potential roommates are eliminated completely.

The walls are painted with natural colors and feature original artwork, created by local artists, that were selected to inspire and promote healing. The beds are positioned to provide direct views of the outdoors, many overlooking the mountains and landscape, and to take advantage of natural light. Much of the indirect lighting in the rooms can be controlled by patients and their visitors.

All of the rooms are organized into three zones. The caregiver

zone is closest to the door with the patient zone in the middle and the family zone farthest from the door and away from caregiver activity. Family members are no longer considered simply "visitors." The emphasis to include the family or "care partners" as active participants in the healthcare delivery model is universally supported by hospital leadership, nurses and physicians.

Among the amenities for patients are flatscreen televisions to provide entertainment and access to educational videos specific to the patient's condition. In the family zone, there's a chair or recliner that can be folded down for overnight sleeping. A small wardrobe accommodates personal belongings as well as an area for gifts and cards.

infection prevention

In addition to private rooms, other measures in the new patient areas provide layers of infection prevention, including energy-efficient mechanical systems that circulate fresh air into the rooms. Selection of materials such as seamless flooring as well as countertops, walls and cabinets that can hold up to hospital-grade sanitizing solutions further support infection prevention.

Each patient room has a private bathroom as well as a separate sink for caregivers to use. Hand-washing sinks are strategically placed at unit entrances to encourage visitors to wash before and after seeing patients.



Coming
Soon

While numerous areas in Susquehanna Tower at Williamsport Regional Medical Center will open in March, watch for more to come later this year.

Emergency Department

Many new private treatment rooms will be in use in the Emergency Department (ED) in conjunction with the March opening, but because of the busy nature of this unit, its construction is being carefully completed in phases to prevent disruption of service. When the first stage opens in March, 22 new private patient rooms will replace 17 curtained bays in the current ED. All 36 private rooms in this modern and highly efficient new unit will be completed by the end of October 2012.

Two critical care rooms as well as a radiology and CAT scan suite will be located within the ED. These new capabilities will provide space and resources to more quickly evaluate and treat more critical patients such as stroke patients.

The Birthplace™

One year into the construction of Susquehanna Tower, which began in October 2009, leadership noted that efficiencies and savings on the project would allow them to complete some of the extra "shelled" space included in the design for future growth. The decision to create a new, modern Birthplace came in late 2010, and that unit will be completed and put into use in mid-June 2012.

The Birthplace features striking views, pampering amenities and optimum working conditions. Located on the third floor of the new Tower, the unit features a glass wall overlooking the new two-and-a-half-story atrium.

The pleasing environment was designed to promote family

bonding. The 17 postpartum rooms will offer amenities such as wireless Internet, flatscreen televisions, an entertainment system for watching movies, mini-refrigerators, upscale toiletries and a comfortable sleep space for a support person.

Imaging Services

The new state-of-the-art Imaging Center will be located on the first floor. In April, the center will feature the region's first 3.0 Tesla MRI, which will provide faster, more precise images. Not only will this advanced technology be available, but it will now provide MRI capabilities at Williamsport Regional Medical Center in addition to the services provided at Divine Providence Hospital.

Overcoming Challenges

The new Susquehanna Tower was designed to help us overcome challenges related to aging facilities and to accommodate the latest in technology. These improvements enable us to:

- Incorporate the latest in digital technology to maximize medical services and efficiencies.
- Enhance the patient and family experience.
- Improve recruitment and retention of expert physicians and nurses.

Our goal was to create patient-centered and family-focused facilities built on an information technology platform with a style that reflects our region's natural and cultural history. Design objectives included utilizing the best practices for deploying advanced technology while emphasizing privacy, infection control and patient safety.

The Tower includes features that ensure operational efficiency, ease of access, flexibility for future changes and a reflection of our faith-based, relationship-orientated philosophy of care. Architectural features include private patient rooms, private patient transport areas and public spaces with open atriums, natural light and home-like settings. Building separate staff and public corridors decreases congestion and noise. Also, the corridors provide clear pathways for staff access and private paths to treatment for patients. Some features that create additional efficiencies include motion-sensor lighting controls in public restrooms, conference rooms and waiting rooms.

Susquehanna Tower Floor-by-Floor Breakdown

Floor 1

EMERGENCY DEPARTMENT

- Private treatment rooms (replaced curtained bays) with television, private telephone and visitor space
- Two critical care rooms and a radiology and CAT scan suite for quick evaluation and treatment of more critical patients

IMAGING SERVICES

- For patient privacy, an internal elevator system takes hospital patients directly to a private waiting area in the Imaging Center's core
- Outpatient imaging patients access a separate comfortable waiting area through the lobby

Floor 3

THE BIRTHPLACE™ (Opening Summer 2012)

- Decentralized nursing model keeps nurses close to moms and babies
- Amenities include wireless Internet, flatscreen televisions, an entertainment system for watching movies, mini-refrigerators, upscale toiletries and a comfortable sleep space for a support person
- Includes outpatient lactation support area to assist moms with breastfeeding concerns after discharge

EDUCATION AND CONFERENCE CENTER

- Six spacious, comfortably appointed conference rooms for health education classes and support groups
- A large conference center equipped with state-of-the-art audio/visual equipment

Floor 4

SURGICAL SERVICES

- Fully equipped surgical suite includes state-of-the-art equipment for open-heart procedures
- Leading-edge arrangement of equipment and technology allows cardiac surgeons to perform complex surgical procedures
- Designed for maximum efficiency and flexibility to expand for future growth and changes in technology

Floor 6

JOINT REPLACEMENT AND SPINE CENTER

- Therapy gym, exclusively for joint and spine patients, designed to simulate everyday activities
- Unit is structured so patients can function more like they are at home rather than in the hospital

PROGRESSIVE CARE UNIT

- 28-bed unit for patients who need cardiac monitoring and an intermediate level of care
- New wireless cardiac monitoring system will enable staff to monitor patients from anywhere in the hospital

When Minutes Count

Teamwork at Muncy Valley Hospital and Williamsport Regional Medical Center Saves Heart Attack Victim

PILOT DAVID CALEHUFF STILL CAN'T BELIEVE WHAT A "TINY LITTLE BLONDE" NAMED AMY DID TO SAVE HIS LIFE.

The registered nurse was part of the team that snapped into action as the 70-year-old stepped out of his car in the ambulance entrance of Muncy Valley Hospital's Emergency Department showing obvious signs of a heart attack. Before he left Muncy Valley Hospital (MVH) for emergency cardiac surgery at Williamsport Regional Medical Center (WRMC), Amy and her co-workers would revive him twice.

He attributed his chest pains that Wednesday morning in September to pulled muscles. When medication

didn't provide relief, he left his basement workshop to rest in a chair. His wife, Susan, was out shopping. With his chest throbbing and a burning sensation in his arm, he saw his white face and blue lips in the mirror and decided, because of the rural location of his home, to drive to a neighbor's house and ask for a ride to the hospital. No one was home.

Amy and a co-worker saw David arrive at the ED and quickly helped him inside. Instinctively she ordered the crash cart to his bedside; her 14

years of experience told her they might need it. Rapidly and systematically they started an EKG and initiated a Code STEMI, Susquehanna Health's streamlined process for emergency heart catheterization. As they prepared him for transport to WRMC, David called Susan and told her to meet him there. Shortly after that, his heart stopped and the staff called a Code Blue.

Amy began CPR. Using the defibrillator from the crash cart, the team shocked his heart back into





With the help of CHAMPS staff such as Jaime Kelley, Exercise Physiologist, David underwent cardiac rehabilitation and gained strength with each new day.

rhythm. David told Amy he was feeling a little better, but it wasn't long before they called Code Blue again.

By the time David had been revived again, the ambulance was ready for his transport. Because his condition was not stable, the team determined Amy should board the ambulance to assist with his care. During the ride to WRMC, Amy held David's hand. She could tell he was a hard worker like her father, who is about the same age.

"You think about people in your own life when you're doing something

like this," says Amy. "That's what motivates you."

She kept David alert, explained what was happening and asked him questions to assess his condition and ensure that his pain was under control. At WRMC he was whisked to the catheterization lab where **Dr. Donald Nardone** was preparing for his surgery. Amy returned to MVH to finish her shift.

Within the 75 minutes following David's arrival at MVH, Dr. Nardone removed a clot from in front of a

stent inserted years ago. His surgery was a success.

At dinnertime that same day, Amy, after finishing her shift at MVH, appeared in David's room in the Intensive Care Unit.

"Do you remember who I am?" she asked.

He remembered.

"I was still in awe that this little blonde administered CPR to me, twice, and took such great care of me in the ambulance. Now here she was taking her personal time to visit me,"

says David. “That’s when I realized how serious my condition had been.”

“When we heard he was doing fine and in the ICU, I had to go see for myself,” says Amy. “A success like this makes everything that I do worthwhile—the lack of sleep, the weekends and time spent away from my family—it makes it all worth it in the end. I had to go and see him.”

Amy credits the training and cohesiveness of her team at MVH for David’s survival during those first critical minutes of his care.

“We train for this. We have a very close-knit staff, and we work well together,” says Amy. “Everything just flowed the way it needed to.”

A day after his discharge from the hospital, David returned to MVH to say thank you for another chance at life.

“I’m a God-fearing person. I know someone Divine was looking over me, and my thanks go to those people who were doing His will. I can’t believe the effort total strangers made to continue my life,” he says.

“There were signs that I ignored. I was tired and got out of breath easily. I attributed it to my age, but now I know it was something more. I had a pretty good track record as far as cardiac care, but I got sloppy on exercise and eating. I smoked, and I thought it wouldn’t affect me. I brushed things off. But these things add up,” says David. “I hope others will learn from this and listen when their body tells them something is wrong.”

David knows he’s fortunate to be making plans to resume flying as a recreational pilot and traveling with his wife using a motor coach they purchased just weeks before his heart attack. That’s why he wants to help others survive.

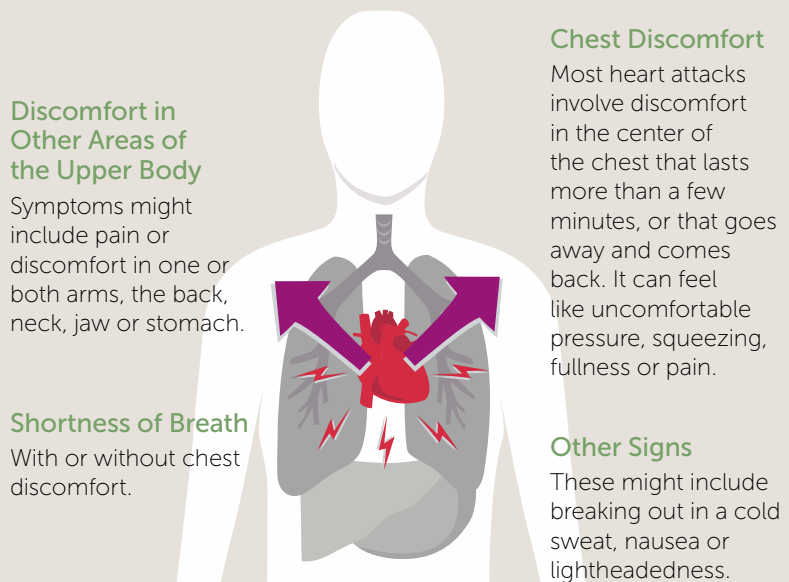
“I’m a God-fearing person.

I know someone Divine was looking over me, and my thanks go to those people who were doing His will. I can’t believe the effort total strangers made to continue my life.”

-DAVID CALEHUFF

Learn the Symptoms of a Heart Attack

David says he initially didn’t recognize signs that he was having a heart attack. If you experience or see any of the symptoms below call 9-1-1 without delay. Emergency medical service personnel can begin your treatment immediately upon reaching your location.



Even if you’re not sure it’s a heart attack, err on the side of caution. Some heart attacks start out slowly with very mild symptoms.

Warning signs of a heart attack as provided by the American Heart Association.

The Donor REPORT

In January 2008, we reorganized our giving levels to recognize our donors beginning with the Capital Campaign for Project 2012. In the next several pages you will find the categories and their brief descriptions as well as the giving levels within each category.

Donors are listed through December 31, 2011.

SIGNATURE GIFTS

Signature Gifts recognizes individuals and organizations who made a commitment to Susquehanna Health Foundation with a contribution of \$100,000 or greater.

Signature Gifts Members

\$1,000,000+

Employees of Susquehanna Health -
Tree of Life Club

Dr. and Mrs. Francis M. Powers Jr.

The Donald B. and Dorothy L.
Stabler Foundation

\$500,000–\$999,999

Divine Providence Hospital Auxiliary

The Klingerman Family

Ann R. Lamade

Muncy Valley Health Care Foundation

Barbara W. Taber

Williamsport Lycoming Community
Fund at the First Community
Foundation Partnership of Pennsylvania

\$250,000–\$499,999

Robert W. Beiter

Elizabeth K. Frederick Estate

The Park Home, Inc.

John & Carol Savoy and
John Savoy & Son, Inc.

Verizon Wireless

The Williamsport Hospital Auxiliary

\$100,000–\$249,999

Larry Allison, Larry Allison Jr., Allison
Crane & Rigging

Anesthesia Associates of Williamsport
AutoTrakk, LLC

Alice and Charles Corbett

Tim and Ruthanne Crotty of
Susquehanna Supply, Co.

George and Shirley Durrwachter

Bill & Mary Fish and Brent & Daria
Fish of Fish Real Estate

Anita Gibbons & Patrick and
Trisha Marty

Steven and Mary Ann Johnson

Rosalie F. Kaleda

John C. and Linda S. D. Lundy

M&T Bank

Bill and Lorraine Manos Foundation/
Fairfield Auto Group

Richard D. and Sylvia R. Mase

Robert and Judy More

The Muncy Bank & Trust Company

Muncy Valley Hospital Auxiliary

PRIMUS Technologies Corp.

Dr. and Mrs. Rodwan and
Zokaa Rajjoub

Reynolds Iron Works, Inc.

Silvertip, Inc.

Albert and Judy Styrcula

George James Tsunis

Weisel Family Trust

Wolyniec Construction, Inc.

John and Sue Young and
Young Industries



We celebrated our donors' generosity and commitment to Project 2012 with events in the new Susquehanna Tower.

Steven P. Johnson, President & CEO, thanked donors for their support of Susquehanna Health.



Donors enjoyed an evening filled with fun and entertainment.



Black Tie Affair a capella group performs for the Keystone Society Donor Recognition Event.

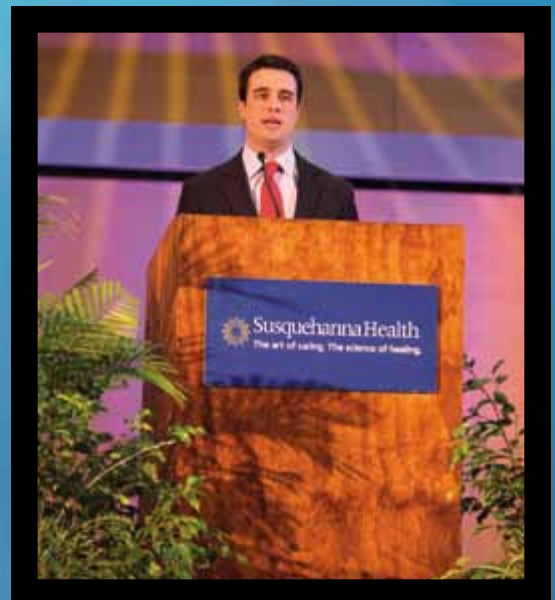
achievement
generous
celebration

Philanthropy Support

The Foundation staff was excited to offer donors tours of Susquehanna Tower before it was open to the public.



thank you



success

Allen Kiessling, Susquehanna Health Foundation Board Member and Chair of the Keystone Society Committee, speaks about the significant impact our annual donors have on healthcare in our community.



Photo courtesy of Michael D. Davis

inspiration



extraordinary





Donors enjoyed an extraordinary evening of art, music and the celebration of philanthropy, which included tours of Susquehanna Tower and a special performance by world-renowned artist Michael Israel. Michael painted five canvases live that were then auctioned off following his performance. Thank you to Albert and Judy Styracula, Steve and Mary Ann Johnson, John and Sue Young, Jerry and Barb Wertz and Steven and Elaine Rockoff for purchasing artwork that night and donating these pieces back to Susquehanna Health.

special





SUSTAINING PROGRAMS THEY BELIEVE IN

You can trace their giving ways back to their mothers.

The untimely passing of one mother and the charitable teachings of the other have set **Michael and Lyneah Hudock** on a course that is making an impact on the community. Whether it's the hospital, symphony, library or Junior League, the Hudocks give their time and financial resources to the

the Gatehouse staff jumped in to help. From a location for the wedding and reception to staff to ensure Lou Anne's comfort throughout the event, every need was met to make the day special.

Shortly after Lou Anne's death, Michael and Lyneah made a donation to the Gatehouse to show their

and several weeks of specialized care in the Level II Nursery at Williamsport Regional Medical Center. Again the Hudocks were struck by the quality of care and thankful for the close location of the hospital that enabled them to easily be with their son during those first critical weeks.

"The Birthplace™ was amazing. You just don't know how good something like that is until you need it," says Michael.

Lyneah was thankful that the birth of their second son, Benner, in January 2011 was more routine, allowing them to appreciate the good care under less stressful conditions. "That was just nice, normal. We could have him in the room with us and really enjoy the experience," says Lyneah.

Then Lyneah's grandmother suffered a stroke in August 2011, requiring critical care at Williamsport Regional Medical Center.

"Certainly in the last few years our family has relied on Susquehanna Health for a whole spectrum of care, and we recognize how truly important it is to have that high level of care available here," says Lyneah.

Some might be surprised by the commitment of resources, both time and money, from a young couple with a growing family, but Lyneah and Michael share a desire to make a difference now that was inspired by Michael's mother, Barbara Hudock.

"If you wait until you have more to give, that time never comes. So we just make a commitment. It's one of the first things to come out of our budget," says Michael, explaining the rule of thirds his mother taught him from a young age. "With every penny you bring in through your work and effort, one third goes to charity, one third to savings and one third to you. We have seen her live what she preaches, and that has been a big influence for us."

"It's great to work with people who share a common goal of helping the community and to see the results of all of our efforts in such tangible ways."

-LYNEAH HUDOCK

organizations they're passionate about. They know their commitment keeps their community, vibrant and full of potential for their young family, but it is also a remarkable tribute to their mothers.

"We gain so much from the community, whether it's for our family to enjoy or the high level of healthcare we receive," explains Lyneah. "We are so thankful and think it's important that we contribute in ways that help sustain those programs."

The young Williamsport natives might not have put healthcare at the top of their list of causes to be passionate about, but the death of Lyneah's mother, births of their children and her grandmother's sudden illness have given them reason to value the medical expertise available through Susquehanna Health.

Shortly after Michael and Lyneah became engaged in the fall of 2006, Lyneah's mother, Lou Anne Bastian, was diagnosed with cancer. When her condition became terminal a few months later, she received hospice care in Susquehanna Health's Gatehouse at Divine Providence Hospital. The couple quickly moved their wedding date forward and was amazed at how

appreciation and ensure those services would be available for others in the future.

"They just went above and beyond what was expected in every capacity. It was amazing. Anytime anyone needed something, they were already there thinking of it. They are truly special angels to do what they do," says Michael.

Later that year Michael and Lyneah were asked to serve on the Keystone Society Committee as part of Susquehanna Health's Project 2012 capital campaign. The newlyweds didn't hesitate to help.

"It was a great experience that enabled me to meet some wonderful people," says Lyneah, who also became involved with the Junior League and fundraising projects for the James V. Brown Library. "It's great to work with people who share a common goal of helping the community and to see the results of all of our efforts in such tangible ways."

The birth of their first son, Michael III, in January 2009 gave Michael and Lyneah another positive experience with Susquehanna Health. Baby Michael arrived six and a half weeks early, requiring an emergency delivery

CORNERSTONE SOCIETY

The **Cornerstone Society** recognizes individuals who supported Susquehanna Health Foundation with a contribution of \$10,000 – \$99,999.

Cornerstone Society Members

\$75,000+

John G. and Mabel M. Snowden
Memorial Fund

\$50,000–\$74,999

Neil and Karen Armstrong
Richard and Nancy DeWald
William Pickelner Estate
Anne L. Pikolas

\$25,000–\$49,999

Christian and Ashley DeWald
Norma B. Franzen
Daphne W. Hill
Michael and Barbara Hudock
Keith and Jennifer Kuzio
Mr. and Mrs. Chip Lamade
George and Elizabeth Logue
Don and Jen Lundy
Mr. and Mrs. Lester T. Mumford
Ralph and Frances Nardi
Birch and Annmarie Phillips
Charles and Mary Santangelo
Donna E. Sayah
Robert and Charlene Shangraw
**Mr. Steven T. Shearer and
Dr. Heather H. Shearer**
The Staiman Families
Gregory and Mary Zeitler

\$15,000–\$24,999

R. Edward and
Linda Alberts and Family
Robert M. Barbour

Frank and Diane Brennan

Michael and Tera Bush

Ron and Jeanne DeFeo

Frani and Doug Doherty

Harold R. Drick

Susan and Charles Duchman

Mr. and Mrs. Jerry Falco

Jones Charitable Foundation

Herman and Molly Logue

E. LaRue Lunt

Robert B. and Barbara A. Lytle

Glenn C. Mechling

Gary M. and Geneva Small Peck

Lucile W. Reynolds

Thomas J. Rider Trust

Waldron Memorial Fund

Thelma White

Michael D. and Mary B. Wolf

\$10,000–\$14,999

Anonymous (2)

Christine A. Ballard

Mike and Donna Bastian

Meg Lamade Beckerman

John L. Jr. and Sarah H. B. Bruch

Tom and Laurie Burkholder

Joseph and Patricia Carter

Steve and Ronna Cassotis

Anne E. Cranmer Estate

Robert P. and Linda H. Crockett

Candy and Steve Dewar

Fred M. and Shirley L. Dieffenbach

Allen E. and Catharine K. Ertel

Representative Garth and Sue Everett

Jo-Anne Fawcett Estate

Florence Putterman Foundation

Samuel and Patricia Fry

Joseph B. and Lillian M. Gehret

Harold and Joyce Hershberger Jr.

Bill and Sharon Hoffmann

Michael and Lyneah Hudock

Paul A. Jarrett

Joe Hume-Promotional Specialists

Patricia W. Kieser

Gloria M. Lundy and
Heather L. Macdonald

Patrick and Trisha Marty

William J. and Peggy McClain

James E. and Elizabeth Mothersbaugh

Andy and Brenda Nichols

George I. Rodgers II, CFP

Paul H. and Tacie E. Rooney Jr.

Frederic G. Sanford, MD

Elva M. Schmidt, RN

James and Debra Schneider

Peter and Linda Schultz

Rita and John Spangler

James and Monica Turri

Robert Schell Ulrich

Anthony H. Visco Jr.

Bob and Irenay Weaver

Marion Calvert Wright Estate

Ken and Stephanie Young

The Caduceus Society recognizes physicians who made a commitment of \$2,500 or greater to Susquehanna Health Foundation.

Caduceus Society Members

\$500,000+

Dr. and Mrs. Francis M. Powers Jr.

\$100,000–\$499,999

Anesthesia Associates of Williamsport
Dr. and Mrs. Rodwan and
Zokaa Rajjoub

\$50,000–\$99,999

Jean and John Burks
Dr. and Mrs. Hani J. Tuffaha

\$25,000–\$49,999

Dr. and Mrs. John C. Becker

Dr. Ronald E. DiSimone
Dr. and Mrs. Daniel R. Gandy
Dr. Ted and Jane Larson Jr.
Dr. and Mrs. George A. Manchester
Drs. Timothy and Kathleen Pagana
Dr. and Mrs. Gordon A. Shaw
Susquehanna Urologic Associates

\$10,000–\$24,999

Dr. and Mrs. William R. Beltz
Christopher and Susan Branton
Dr. and Mrs. Paul W. Braunegg Jr.
Dr. and Mrs. Leonard R. Collins
Greg and Marilyn Frailey
Dr. and Mrs. Michael Hoffman
Dr. Renuka Kakarala and
Dr. Sai B. Sajja
Dr. and Mrs. Charles D. Lamade
Dr. and Mrs. Donald J. Leathers
Dr. and Mrs. Albert G. Liddell
Dr. William C. and
Beverly H. McCauley
Dr. and Mrs. David B. Nagel

Dr. and Mrs. Harshad Patel
Jim and Peg Redka
Dr. René and Diana Rigal
Dr. and Mrs. Warren L. Robinson
Keith and Pam Shenberger
Dr. and Mrs. Stephen Weber

\$2,500–\$9,999

Anonymous (2)
Dr. and Mrs. Carl R. Albright
Dr. and Mrs. David N. Ambrose
Charles and Karla Anderson
Dr. and Mrs. Michael I. Belenko
Dr. and Mrs. Mark D. Beyer
Drs. David and Susan Borys
Dr. Karen Brady
Dr. Tom and Rebecca Burke
Dr. and Mrs. John V. Calce
Cornerstone Family Health, P.C.
Dr. and Mrs. Scott D. Croll
Dr. T. E. Cullen and Bronwen Cullen
Dr. and Mrs. Gary M. Dincher
Dr. Sabrina Dowd
Drs. Dilip Elangbam and
Subadani Angom
Dr. and Mrs. Joe English
Dr. and Mrs. Todd Fausnaught
Mr. David and Dr. Lisa Galloway
Dr. and Mrs. Steven W. Geise
Dr. Kenneth Glaser and
Mrs. Tammy L. Glaser
Dr. Daniel J. Glunk and
Dr. Margrit M. Shoemaker
Dr. and Mrs. Russell L. Gombosi
Dr. Judith Gouldin and
Mr. Anthony Parente

Barbara Heere and Bernard Butkiewicz
Dr. and Mrs. Timothy Heilmann
John and Veronica Jones
Dr. and Mrs. William F. Keenan
Dr. and Mrs. I. G. Kim
Dr. and Mrs. Kevin W. Kist Jr.
Dr. Paul and Cynthia Leber
Dr. and Mrs. Eric Longenbach
Dr. and Mrs. David J. Lopatofsky
Michael Marceau, MD
Dr. Thomas J. and Reverend
Dr. Lois D. Martin
Dr. Naresh C. and Anita Nagpal
Dr. and Mrs. Alexander R. Nesbitt
Stuart M. Olinsky, MD
Dr. William and Cynthia Pagana
Dr. and Mrs. Young W. Park
Dr. and Mrs. Frank W. Parker
Dr. and Mrs. William J. Peck
Dr. Robert and the Reverend
Christine Purcell
Dr. Christopher Reilly and
Dr. Teresa Bianco
Dr. Mohammad Shafique
Dr. and Mrs. Sam F. Stea
Bernard and Sarah Steinbacher
Dr. Allan K. Stryker
Dr. Lawrence and Nancy Tomack
Dr. Peter and Rose Trevouledes
Dr. and Mrs. Thane N. Turner
Dr. and Mrs. Seth I. Weber
Rosemary Wiegand and Brett Homan
Dr. and Mrs. Daniel E. Wolfe
Edward G. Wyshock, MD



The 2012 Business Health Award recipient was Larson Design Group.

Susquehanna Health Hosted PM Exchange

to recognize Business & Industry Donors and announce the First Annual Business Health Award Recipient

Susquehanna Health and the Williamsport/Lycoming Chamber of Commerce have established the new Business Health Award to recognize businesses that provide innovative health and wellness programs for their employees. A well-designed workplace wellness program can improve

employee health and morale, help reduce healthcare costs, encourage employees to be more productive, decrease absenteeism and reduce stress levels. With this award, we will recognize employers in the region who promote wellness and implement those initiatives in their workplaces.

Pictured from left to right are: Vince Matteo, President & CEO, Williamsport/Lycoming Chamber of Commerce; Steven P. Johnson, President & CEO, Susquehanna Health; Brenda Nichols, Senior Vice President and Chief Financial Officer, Larson Design Group; William Phillips, Vice President of Human Resources, Larson Design Group; Jerry Wertz, Susquehanna Health Foundation Board Member and Chair of the Business & Industry Committee.



All businesses within Susquehanna Health's 11-county service area will be considered. An online application will be available several months prior to the awards presentation. Information will be distributed through the Chamber of Commerce as well as Susquehanna Health's website.

Business & Industry Gifts recognizes businesses that supported Susquehanna Health Foundation with a contribution of \$5,000 or greater.

Business & Industry Members

\$100,000+

AutoTrakk, LLC
M&T Bank
The Muncy Bank & Trust Company
The Park Home, Inc.
PRIMUS Technologies Corp.
Reynolds Iron Works, Inc.
Silvertip, Inc.
Verizon Wireless
Wolyniec Construction, Inc.

\$50,000–\$99,999

Alexander Building Construction Co.
Jersey Shore State Bank
McCormick Law Firm
PPL Corp. and Affiliates
TurnKey Construction, Inc.
TurnKey Electric, Inc.
Webb Communications, Inc.

\$25,000–\$49,999

Beiter's Inc.
Citizens & Northern Bank
Glenn O. Hawbaker, Inc.
Hudock Moyer Wealth Resources
John Savoy & Son, Inc.
McNerney, Page, Vanderlin & Hall
ParenteBeard LLC
Sovereign Bank
Susquehanna Bank
Tura, L.P.
Weis Markets, Inc.

\$15,000–\$24,999

Clear Channel Corp.
Construction Specialties, Inc.
Larson Design Group
Pennram Diversified Mfg. Corp., Andrew and Karen Hooker
Woodlands Bank

\$5,000–\$14,999

Aquarius Pool & Patio, Inc.
Billtown Mechanical Corp.
Brodart Co.
Central Equipment Company
Data Papers, Inc.
EmCare, Inc.
Forrester Environmental, Inc.
G. R. Noto Electrical Construction, Inc.
The Herman O. West Foundation
Hermance Machine Company
I.C.S. Inc. - Ron Hine
J and M Construction Specialties, Inc.
KBF Print Technology

Keystone Bingo Supply, Inc.
Keystone Data Systems, Inc.
L-3 Communications Electron Devices
Lamar Advertising
Lezzer Lumber Co.
Lundy Construction
Mid-State Beverage Co. – Don and Betty Jo Heim
Murray Motors – Brian Peace and Bill Brown
Norcen Industries Inc.
Patterson-Brandt, Inc.
Penn Recycling, Inc.
Ronald McDonald House Charities of N.E.P.A.
Schneider Valley Farms Dairy
SelecTrim Corporation,
James Wood and Marcus Annicelli
Steinbacher Enterprises, Inc. – Dave and Karen Steinbacher
Trojan Tube and Boiler Services
Williamsport Moving Company

More than 375 individuals attended the Williamsport/Lycoming Chamber of Commerce PM Exchange that was held in conjunction with the Foundation's Business & Industry Donor Recognition Event at the Susquehanna Tower.



KEYSTONE SOCIETY

The Keystone Society lists those who make a commitment to contribute \$250 or more annually to Susquehanna Health Foundation. Listed below are all Keystone Society members through December 31, 2011.

Keystone Society Members

\$1,000–\$9,999

William L. Aunkst

Rod and Lynn Bailey and Family

Julie Barner

Dean and Joy Barto

J. Budd, Jean L. and Laurie J. Bell

Lori and Robert Beucler

Blackhawk Specialty Tools

John and Karen Blaschak

William J. Burd

Mr. and Mrs. Michael J. Casale Jr.

Nicholas and Carol Catino

Central PA Square &

Round Dance Association

Ronald E. Cioffi

Paul and Sarah Corson

Dr. and Mrs. Scott D. Croll

D. Creamer and Associates, Inc.

William and Joyce Davis

Peter and Ro DePasquale

Richard and Nancy DeWald

DeWald Chiropractic

Divine Retiree Travelers

Merrill and Dorothy Dodge

Donald R. Lundy Jr., VMD/Twin Hills

Veterinary Hospital

Dr. James and Emily Douthat

Mary D. Elder

Elite Feet, Inc.

Eric Stashak Photography

Evelyn Lunt Gephart, Norma Lunt Mullen

and E. LaRue Lunt

Chaplain David K. Fishel

Mary K. Fortin

Fraternal Order of Eagles - Williamsport Aerie #970

Dr. and Mrs. Robert H. Fredrickson

Friend of the Breast Health Center

Friends and Family of the Caputo and Matlack Families

Richard A. Fry

Timothy M. and Mary C. Gage

Dr. and Mrs. Daniel R. Gandy

LaVera and Bill Gehron

The Dr. William H. Gehron Jr. Family -

Betty Gehron

Gesang Verein Harmonia, Inc.***Ladies Auxiliary***

William L. Gettings

Ralph and Mary Hart Endowment Fund

Donna L. Hill

Ann M. Hocker

John E. Hoffman

Kenneth and Ann Hoover

Stephen and Martha Huddy

Barbara and John Hunsinger

Roger and Denise Jarrett

Wiebe Jelsma

Jersey Shore Football Booster Club

Allen and Ashley Kiessling

Ann L. Knauber

Franklin J. Lapp

Patricia LeFever

Leroy O. Buck Post 7863 -

Veterans of Foreign Wars

Dr. and Mrs. David A. Lightman

Pamela J. Lundy

John P. and Judy L. Maietta

Heather McLaughlin

Richard and Gina Michael

Timm and Kristen Moyer

Cary and Marty Muggleton

Judge Malcolm Muir

Norma Lunt Mullen

Muncy Inmate Organization

John and Jane Naval

Newberry Lioness Club

Thomas and Gloria O'Connell

The Old Corner Hotel

PATHS

Kathryn A. Penfield

Penn Cabling Services, Inc.

Pennell & Wiltberger, Inc.

Henry and Eleanor Perciballi

William L. Phillips

Picture Rocks Lions Club

Ann F. Plankenhorn

Jim and Peg Redka

Ronald and Lisa Reynolds

Joseph and Louise Rossi

Jane A. Rutledge

Saint John's - Newberry United Methodist Church

Frederic G. Sanford, MD

Schrader Architectural Products -

Jack and Cindy Schrader

Dr. Thomas C. Smith and

Suzanne Dively-Smith

Jean Snowiss

Abram M. and Dorothy M. Snyder

Foundation, Inc.

St. Nicholas - St. Mary's School

Barry and Barb Stiger

Susquehanna Paper & Sanitary Supply Corporation

Ronald and Patricia Walko

The Ward Foundation

Ward Manufacturing

Sherry and Jason Watts

Marilyn D. Wehler

Jerry and Barb Wertz

Westfield Capital Management Company LP

Ronald and Marlyne Whaley

Thelma White

Williamsport Area***High School Booster Club***

Sharon L. Winn
Woodlands Bank Employee Fund Raiser
Group
Charles Yanofsky, MD
Marie B. Zurinsky

\$500–\$999

A Day At The Museum
Tammy Anderer
Arnot Sportsmen Club, Inc.
AutoTrakk, LLC
Bank of America Matching Gifts
Ronald Beckman Jr.
Cynthia and Jeff Bower
Christine A. Boyles
John and Cynthia Brindger
Susan Browning
C. Edward Carson
Cheryl and Dale Chapman
Karen S. Clark
Alan and Patricia Cohick
John and Lydia Comerford
John M. and Linda D. Confer
Tim and Ruthanne Crotty
Melissa and Robert Davis

Howard Dean

David and Marjorie DeBlander
Ron and Jeanne DeFeo

Sandra L. Derr***Andrea Drake***

Barb Dugan and Keith & Kim Steimling
Bonnie L. Eck
Betty P. Edkin
Willets G. Ellison
The Families of Bonnie Tallman and
Marilyn Frederick
James and Barbara Fedele
Fred Fischer

Harold and Sharon Fogle

Robert J. Foust
Clyde and Elaine Fuller
Mr. and Mrs. James K. Gates II
Crystal Gilbert
Stacey Girven
Robert and Clara Mae Glunk
George E. Gragson
June E. Grant

Heather F. Haefner and Mark Anderson
Robert B. Hamilton III
Cynthia Hamilton Phillippe
Joan H. Harman
Dr. Sheila Hartung and
Dr. Steve Hartung

Hermance Machine Company

Becky Hess
Cheri and Robert Heverly
Daphne W. Hill
Rexford and Catherine Hilton
Deborah M. Hoffman
Anne and Tim Holladay
Fred A. Holland
Horsepower HOG Chapter 1423
Hudock Moyer Wealth Resources
James Huebert
Huffman's Office Equipment
David T. Hunter
Integra Business Center, Inc.
Bob and Lou Ann Ireland
Sandra A. Irion
James S. Armstrong Associates
Jersey Shore Boys Basketball Program
Reverend and Mrs. Charles P. Johnson
Mr. and Mrs. Robert E. Kane Jr.
Kiwanis Club of Williamsport
Kyle Klingborg
Oscar and Shirley Knade
Joan Koontz
Keith and Jennifer Kuzio
Nancy J. Lady
Ann Y. Lamade
Mr. and Mrs. Howard J. Lamade Jr.
Dr. Paul and Cynthia Leber
H. Franklin and Pamela Little
Loyalsock & Montoursville
Garden Clubs
Charles and Hallie Luppert
Donna L. Lynn
Drue A. Magee
J. J. Magyar
Chris and Mike Marrasso
Mr. and Mrs. Stephen A. Martin
Mary Frances leMat Social & Scientific
System Community Giving
Vincent J. and Susan E. Matteo

Robert J. Mays shock
Ann McCracken
Barbara and Bernard McFadden
Arleen P. McGuire
William S. McKay
Linda M. Mignot
Patricia E. Miller
Jane S. Mitchell
James J. Moore
James and Shirley Muffly
Norcen Industries Inc.
Jim and Terri O'Connor
Mark C. Oberheim
Old Lycoming Township
Volunteer Fire Company
***Marie Patchen and Family, Bonnie &
Pat Fierro, Linda & John Barone, Jackie
& James Taylor, and Robert & Nancy
Patchen***
Michael C. and Linda L. Philbin
Ben and Ann Riles
William G. Ritter
Phyllis M. Robinson
Cecelia L. Rogers
Patricia A. Rogers
Flora E. Rothrock
Michael L. Rupert
James E. Schaefer
Richard and Elizabeth Schluter
Charles and Helen Schwarz
Marie Scott
***Dr. Kenneth T. and Mrs. Jo'an E.
Settemyer***
Dr. and Mrs. Gordon A. Shaw
Mary E. Jolin Smith, Ronald and Dawn
Smith & Family, and Barry and Teri Smith
Fisher & Family
Harry L. Snook
Ellen and Hal Spooner
St. Nicholas - St. Mary's School
Bob and Heidi Stopper
Suzanne and David Stopper
James and Carol Stroble
Susquehanna Health Retirees
Susquehanna Health
Retirees Crafters Group
Barbara W. Taber

People are motivated by many different reasons to support Susquehanna Health.

Some give in gratitude for excellent care they received at one of our hospitals or because their loved ones benefited from our services. Others simply want to ensure the best possible healthcare will always be available for our region.

We are proud of the many programs and services our hospitals have to offer. Because of the continued involvement of our community—and the generous support of friends like you—Susquehanna Health Foundation looks forward to tomorrow and we offer heartfelt thanks to our many contributors.

When you give...

You celebrate life **675** individuals were honored or remembered through a tribute gift in 2011

You become our partner in healthcare **3,916** individuals, organizations and foundations supported Susquehanna Health in 2011

You leave a legacy **\$383,875** was donated through planned gifts and bequests in 2011

Board of Directors 2011-2012

Steven P. Johnson, PRESIDENT

John M. Young, CHAIR

Keith Kuzio, VICE CHAIR

Donna L. Bastian, SECRETARY

Rodney N. Bailey, TREASURER

John Becker, MD

Robert Crockett

Timothy J. Crotty

Douglas Doherty

Mary C. Fish

Paul Heise

Mark Huffman

Barbara Hudock

Roger D. Jarrett

Stephen D. Keener

Allen Kiessling

Lynda Livingston

John C. Lundy

Rich Michael

Geneva Peck

Joseph Reighard

Paul H. Rooney Jr.

Charles J. Santangelo

Marvin H. Staiman

Jerry Wertz

Susquehanna Health Foundation Staff

Sherry Watts

Vice President of Development

Thomas M. O'Connell, CFP®

Director of Major & Planned Gifts

Cheryl Chapman

Special Events Coordinator

Valerie Trego

Business Giving & Grants Coordinator

Amanda Wallace

Annual Giving Coordinator

Cheryl Sittler

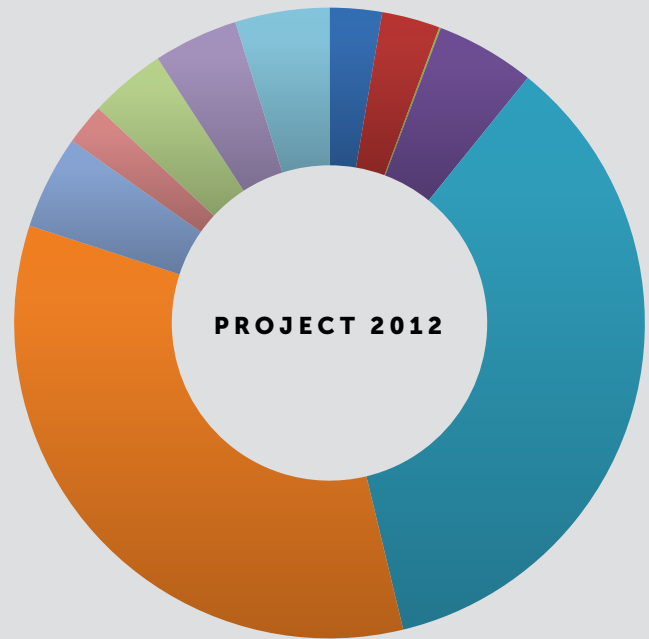
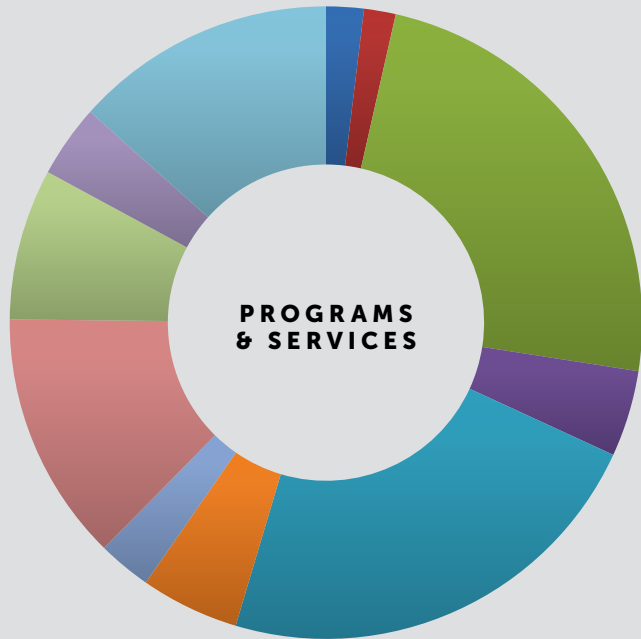
Secretary

Susquehanna Health Employees donated **\$197,357** in 2011

2011 IMPACT REPORT

BREAKDOWN

OF CONTRIBUTIONS BY FUNDS



| | | |
|--------------------------------------|---------|-------|
| Dialysis | 309,260 | 23.9% |
| The Gatehouse | 294,163 | 22.8% |
| Other | 173,175 | 13.4% |
| Home Care & Hospice | 165,368 | 12.8% |
| Skilled Nursing Unit | 100,050 | 7.8% |
| Greatest Need - Susquehanna Health | 65,143 | 5.0% |
| Williamsport Regional Medical Center | 57,018 | 4.4% |
| The Birthplace™ | 48,031 | 3.7% |
| Scholarships & Awards | 35,291 | 2.7% |
| Breast Health Center | 24,874 | 1.9% |
| Cancer Center | 20,974 | 1.6% |

\$1,293,347

| | | |
|--------------------------------------|-----------|-------|
| Emergency Department | 1,000,250 | 35.4% |
| General - Project 2012 | 953,116 | 33.8% |
| Divine Providence Hospital | 143,391 | 5.1% |
| Williamsport Regional Medical Center | 136,363 | 4.8% |
| Muncy Valley Hospital | 135,886 | 4.8% |
| The Birthplace™ | 122,408 | 4.3% |
| Skilled Nursing Unit | 110,794 | 3.9% |
| Cancer Center | 84,218 | 3.0% |
| Breast Health Center | 75,685 | 2.7% |
| Orthopedics | 59,568 | 2.1% |
| Cardiac Services | 2,345 | 0.1% |

\$2,824,024

TOTAL
\$4,117,371

KEYSTONE SOCIETY

\$500–\$999 *cont'd*

Ruth N. Taddeo
 Thomas S. Urban Family
 Bill and Kim Van Campen
 Deborah and Bob Wallace
 Jerry and Joy Walls
 Dominique Watson
 Marshall and Melissa Welch
 West Branch Tennis Club, LLC
 Annette S. Whitmoyer
Donald N. Wilver Jr.
 Alex and Tracie Witter
 Mary Alice S. Woodling
 Young Men's Democratic Club of
 Lycoming County, Inc.

\$250–\$499

Sharon R. Adams
 Colleen P. Albright
 June L. Alsted
 Anadarko Petroleum Corporation
 Keith L. Anderson
 Carol L. Aul
Steven Avery
 Alfreda Baer
 Brian and Victoria Bair
 Matthew and Heather Baranoski
 Michael Philip Barclay and Laurie Crockett
 Barclay
 Gregory L. Beck
 Greg and Katie Bell
 Mary Ann Bellfy
 Whitney Bernan
 Daniel C. and Rebecca C. Berninger
 Stacey Berry
 Bethel Linden Presbyterian Church
 Dr. and Mrs. Mark D. Beyer
 John Bianco
 Eric A. Bickhart
 Tom and Jane Bixler
 Bostley's Pre-School Learning
 Centers, Inc.
 Dennis Bower
 Lee and Greg Bower
 Sherri M. Bower
 Christine K. Broscious
Charles G. Bryant
 Mr. and Mrs. John F. Bubb

Deanna K. Bump-Wilton

Dr. Debra Burrows and
 Mr. Arnold Burrows
 Wayne Butler, P.A.-C
 Peggy J. Caldwell
Canton Mennonite Church
Meliss Caroway
 Christina M. Carter
 Kenneth D. Caster
 Mr. and Mrs. Albert A. Clapps
 Scott Clark and Family
 Coffey Communications, Inc.

Deborah Colocino
 Phyllis K. Columbine
 Beth Cooper

Connie Coyner
 Jeffrey Cundiff
 Mark and Annette Davis

Donna L. Decker
 Danielle Derr

Mildred I. Dessify**Donald and Nancy Devorris**

Omar E. DeWald
 Robyn L. Diakite
 Dale K. Diermyer
 Robert and Emily Dietrich
 Fred and Pat Dincher & Family and Joseph
 and Virginia Novak & Family
 Connie K. Dinkler

**Division of Instruction, Maryland State
Dept. of Education**

Boneita A. Dodge
 DuBoistown Fire Department
 Diane L. Drajem
 Dena K. Dunlap
 Virginia Eaton
 Bonnie B. Eberlin

James Eck

Janice M. Eckrote
 Greta L. Eichenlaub
 Reverend Father Fidelis I. Ekemgba
 Employees of Woodtronics
 Lisa R. English
 Pamela R. Erb
 Bonnie M. Esposito
 Sue and Ray Evans
 Susan S. Everett

Wayne and Gerry Fausnaught
 Donald and Irene Fielding
 First United Methodist Church - Muncy
 Chaplain David K. Fishel
 Mrs. Dean Fisher
 Deborah Fontaine
 Cynthia F. Fox
 Ronald and Judy Frick
 Kathy Fry
 Nichole E. Frye
 Marc C. Galin
 Thomas and Sarah Gehret
 Rebecca D. Gensel
 Davie Jane and Fred Gilmour
 Patrick and Joy Gilson
 Guy and Dorothea Giordano
 Sue and Terry Girdon
 Ashley J. Glace
 William and Joan Goldstein
 Robin Hakes
 Kathy Harris
 Greg Harrison
 Steve and Phoebe Hauptert
 Nancy J. Hauser
 Julie Hawkins
 Jean T. Heller
 John D. Helminiak
 V. Michael Heyd
 High Companies
 Toni and Carl Hiller
 Danielle Hinds
 Renee and Johnny Hinds
 Stephen D. Holcomb
 Horizon Federal Credit Union
 Ms. Danna L. Houseknecht
 J. Marco Hunsberger
 Norman and Muriel Jolin
 Melissa A. Jones
Christina Jordan
 R. David and Joann Kay
 Susan J. and Mark Keeler
 Denise E. Khan
 Matthew Kiessling
Stephanie King
 Barbara A. Kitka
 Cindy K. Kling
 Karen B. Kling

Sharon M. Knittle
 Dr. and Mrs. Aaron J. Kolb
 Michele K. Kondisko
 Bev Koziol
 Dianna J. Kuzo
 Ashley A. Krause
 Richard N. Landis
 Timothy R. Lease
 Judith A. Lechler
 Suzanne and Cole Lee
 Donald E. Leidhecker and Family

Mrs. Robert B. Lenhart
 Sharon T. Lindauer
 Lions Club of Newberry, Inc.
 Marlys J. Litchfield
 Denny and Debbie Loner
 Anthony A. Lovecchio
 Melissa D. Lundy
 M&T Investment Group
 Christopher and Anne Macdonald

Donna M. Mackin
 Donna Dashem and the Dashem Family,
 The Croce and Snook Families, John
 Hamby, Cathy Mackrovich,
 Lori Shaiken, Jackie Parucha, and
 Mary Coploff

Eileen (Bower) Major

Carol E. Mann
 Kimberly and David Manning
 Lori Markel
 Thomas Marnon
 Charles W. Martin
 Michael M. Martin
 Debra A. Masser
 Rosanne Mattiace
 Melinda McCarthy
 Patti J. McClelland
 Jay and Sue McCormick
 Pat and Jim McGee

Linda S. McKee
 Renee K. McNutt
 Patricia Messinger
 John and Suzette Meyer
 Theresa Meza
 Cynthia Miller
 Toni Miller
 Loretta Moffatt

Staci Mondell
Nancy and LaRue Montanye
 Deborah and David Montgomery
 Shelly L. Moore
 Barbara J. Morgan
 Pammy N. Mosteller
 Sharon Moyer
 Tessa K. Mundrick
 Terry Mutchler
 Dr. Linda Myers and Earl F. Myers

Roger W. and Patricia D. Myers
 Ruth H. Myers
 Nicole and Tony Nardi
 Danut F. Neagu
 Nevill's Flowers
 Gail Opperman
 William P. Panaski

Dr. and Mrs. Timothy P. Pastore
 Nancy E. Patchen
 Dave and Linda Phillips
 Mrs. Jonathon G. Phillips
 Mr. and Mrs. Gayle N. Phillips
 Anita L. Ploetz

Lisa A. Poust
 Rick, Anita and Amy Poust
 Rick Mason and Anne Rice
 Wayne and Ann Rider
 William Rischar
 Wayne and Candy Robinson

Diane M. Rodgers
 Susan Sarginger
 Edward E. Schechterly
 Linda Schlesinger
 Timothy E. Schoener
 Fred L. Sereno
 Carol P. Shaner
 Timothy and Shirley Shannon
 Ann and Bill Sherwood

Mark F. Shultz
 Timothy and Sylvia Shumbat
 Steven and Margaret Sleboda
 James W. Slotterback
 Amanda J. Smith
 Susan M. Smith
 Laura Sole
 The Sovell Family
 Pamela C. Spigelmyer

Karen Spooner

Donna Stackhouse
 Dale B. and Grace S. Stebner
 Lynnnda H. Steimling

Nicol Styer

Susquehanna Software

Melinda Sutton

Richard Sutton
 Kathryn Swatkowski
 Robert Sweeney

The Blessing Insurance Agency, Inc.

Jessica Thompson
 Peggy A. Thompson
 Tiadaghton Quilt Guild
 Valerie and Joshua Trego

Harry S. Trump

Garry and Janet Ulmer
 Amy Vanderwall
 Jeff Verzella

Susan E. Vilella
 Colleen M. Waddell
 Dr. and Mrs. W. John Wagner
 Stephen and Corinne Waldman

David and Elaine Waltz
 Molly Warnick-Regelman
 Mark and Kelly Watson
 Francesca Weaver
 Suzanne and George Weidle

Betty J. Weiskerger
 Ats and Betty Welker
 Sally A. Wentzler

Tara Wesneski

Barry K. and C. Cynthia Whipple
 Annette S. Whitmoyer
 Dawn Whitmoyer
 Scarlet Williams

Williamsport Riding Club

Marion V. Wilson
 Colette Wintersteen
 David and Lottie Witmer
 Lynn Womer
 Drew and Christianne Wright and Family
 Linda M. Younes
 Rebecca L. Young
 Romy D. Young
 Jessica Zarko



Planned Charitable Giving:

Helping You Help Your Community

By: Dale A. Tice, Esq., Marshall, Parker & Associates

When families contemplate estate planning, the initial focus is usually on passing assets from the parents to their children.

But when talking with a professional estate planner about their goals, many families will discuss the importance of giving back to the local community. Indeed, when presented with the possibility most people favor the idea of making a philanthropic gift that will provide a tangible benefit at a place where it will be appreciated. What they might not realize is while helping their charity they can also experience significant tax savings as an added benefit.

Planned charitable giving can be accomplished in a variety of ways. While many individuals choose to include a charitable bequest in their wills, others enjoy the satisfaction of seeing lifetime gifts help the charity of their choice. Gifts can be made of cash, real estate or even the right to receive oil and gas royalties. From the perspective of tax savings, gifts of highly appreciated property are often very effective.

Tax benefits can include an immediate reduction in income taxes or long-range estate tax savings. By making a gift of property that has increased in value, very significant capital gains savings can be realized. Though planned charitable giving might seem complex, working with a team of professional planners will give assurance that you will achieve your goals. Options for lifetime giving that might be considered include:

- Charitable Remainder Trust
- Charitable Lead Trust
- Charitable Gift Annuity

Your estate planning professional can help you understand which of these planning options makes the most sense for you. Truly, planned charitable giving can create a “win-win” by allowing you to help your local community today with the potential for significant tax savings for your family both now and in the future.

Lifetime Giving Options Explained:

Charitable Remainder Trust – Planning with this type of trust involves a gift of income-producing property or the purchase of an annuity. You will receive income from the trust for your lifetime or a term of years, and the property will then pass to the designated charity upon termination of the trust.

Charitable Lead Trust – This trust works as the opposite of the Charitable Remainder Trust. The charity will receive the income during the term of the trust, with the property gifted to the trust passing to the donor’s family when the trust ends.

Charitable Gift Annuity – This plan involves making a gift to a charity that will in turn provide a charitable donation, an income tax deduction and a guaranteed lifetime income stream.

Attorney Tice is an Elder Law, Estate & Gas Royalty Planning Attorney with the Law Firm of Marshall, Parker & Associates in Williamsport and Jersey Shore. His practice focuses on helping families protect their land and assets from long term care costs and estate taxes.

He can be contacted at (570) 321-9008 or dtice@paelderlaw.com.

LEGACY SOCIETY

The Legacy Society recognizes those who made a planned or estate gift to Susquehanna Health Foundation.

Legacy Society Members – Current

John and Eva Mae Archer
Mr. and Mrs. Donald R. Creamer
John and Janet Dougherty
G. Alan and Priscilla D. Frey
Timothy M. and Mary C. Gage
Dr. Davie Jane Gilmour
Joe and Carolyn Hume
Steven and Mary Ann Johnson
Mr. and Mrs. Michael D. Karstetter
Raymond E. Kehrer Jr.
Ruth and Ben Keller
Mr. and Mrs. George Koons
Nancy J. Lady
In Memory of Andrew Lady
Christy and David Lassiter
Stephen C., John W. and
John C. Lundy Fund
Virginia W. MacIndoe
Dr. and Mrs. George A. Manchester
Charlotte E. Maxwell
Mr. and Mrs. Peyton D. McDonald
Dr. Robert and the Reverend
Christine Purcell
Audrey M. Pursell
Donna E. Sayah
Walter and Marian Schell
Mr. and Mrs. Michael D. Scherneck
Jean and J. Richard Soars
Barbara W. Taber
Bill and Kim Van Campen
Mr. and Mrs. Richard A. Vanderlin

Matthew G. Wech
Marshall D. Welch Jr., DDS
Dr. and Mrs. Robert S. Yasui
Dr. and Mrs. Chan Yoon
Marie B. Zurinsky

Legacy Society Members – Past

Ruth D. Adams Estate
Ruth A. Anstadt Estate
Ruth S. Askey Estate
Howard R. Baldwin Jr. Estate
Estelle S. Bartlett Estate
Dorothy M. Bartlow Estate
Kathryn R. Biggar Estate
Gertrude M. Blatchley Estate
Margaret R. Brown Estate
Richard K. Burrows
Helen Callaghan Estate
Adelina Caporaletti
Palma Colesanti Estate
Alice and Charles Corbett
Anne E. Cranmer Estate
Ralph R. Cranmer Estate
A. Virginia Dannelley Estate
William H. Jackson Dawson Estate
Austin Deck Estate
Mary G. Dore Estate
Richard M. Dore Estate
James W. Dow Estate
William J. Dunlap Sr. Estate
Walter P. Eilers Sr. Estate
Jo-Anne Fawcett Estate

Katherine M. Fetter Estate
Elizabeth K. Frederick Estate
In Memory of William Frederick
Leonard F. Gajewski Estate
Lester Gehr Estate
George W. and Lillian B. German
Testamentary Trust
Louise Goodman
Peter J. Goodwin
Amelia F. Grieco Estate
Mary Hanner Estate
Ralph and Mary Hart Endowment
Fund
Catharine Hollenbeck Estate
Ida A. Hoshauer Estate
B. G. Johnson Estate
Rosetta C. Keefer Estate
Esther Kehler Estate
Matthew Kissell Estate
Mary E. Krise Estate
Elizabeth P. Lyon Estate
Joseph N. Lytle Estate
Thomas J. Malloy Estate
W. Robert Maust Estate
Peter J. McGovern
Janet I. McQuillen Estate
Kenneth Meier Estate
Mary G. Mosser Estate
Wilhelmina J. Myers Estate
Theresa M. Paternostro Estate
William Pickelner Estate
Dr. and Mrs. Paul Reis
In Memory of Al J. Smith

LEGACY SOCIETY

| | | |
|---|--|----------------------------------|
| Robert K. Rewalt Estate | Marvin and Jean Staiman | Raymond F. Vogel Estate |
| Thomas J. Rider Trust | Anna D. Stapleton Estate | E. Louise "Petie" Waltman Estate |
| Lulu B. Roat Estate | Marion Stopper Estate | Dwight and Eunice Waltz Estate |
| Beatrice W. Royston Estate | Estate of Ralph B. Strawbridge <i>In Memory of John W. and Sarah M. Strawbridge and Enjar and Clara P. Norman</i> | Leonard G. Weber Estate |
| Joy M. Shaner Estate | Luther L. Stroup Estate | Weisel Family Trust |
| Rebecca E. Sherman Estate | W. Wendle Taggart | Eugene Welteroth Estate |
| Emily W. Simpson Estate | Russell E. Tingue Trust and Emogene L. Tingue Estate | Helen Wilkins Estate |
| Henry C. Sitler Estate | Argeno and Eleanor Vannucci Estate | Beatrice I. Winters Estate |
| Josephine Smith Estate | Ross Vickers Estate | Marion Calvert Wright Estate |
| John G. and Mabel M. Snowden Memorial Fund | | Albert F. Young Trust |
| Louella B. Snyder Estate | | Mary Louise Zimmerman Estate |

TREE OF LIFE CLUB

The Tree of Life Club is the employee giving club and has raised an additional \$500,000 through its second campaign. Listed below are all **new** TLC donors from **September 1–December 31, 2011**.



| | | | |
|-----------------------|--------------------|------------------|----------------------|
| Daeemah Abdullah | Taron C. Clanton | Tiffany Klobchar | Tegan Spirko |
| Kyrie M. Andrus | Samantha Cohen | Jenna Lorson | Karen Spooner |
| Steven Avery | Scott Corson | Jillian MacInnis | Misty Loraine Spotts |
| Kyana Bell | Mildred I. Dessify | Rebecca Meyer | Tiffany Steppe |
| Donald Bellinger | Andrea Drake | Lianna Michael | Anika Stewart |
| Allison Brion | Cynthia K. Duck | Shaylene Mordan | Suzanne M. Stopper |
| Sheri Brooks | Destiny Duffield | Kaitlyn Nasdeo | Nicol Styer |
| Gregory Brown | James Eck | Lindsay Pappas | Melinda Sutton |
| Deanna K. Bump-Wilton | Billie Jo Emery | Denise Paras | Robin Tarbox |
| Meliss Caroway | Barbara J. Evans | Jenna Portanova | Carolyn Taylor |
| Leonel Carranza | Amer Ghayyada | Wendy L. Riddell | Franklin D. Varney |
| | Joni B. Harrison | Keea Roberts | Glenda Wagner |
| | Joseph Hauserman | Karla Rodriguez | Madison Wertz |
| | Mark Hembree | Dale E. Schenck | Tara Wesneski |
| | Daniel L. Hoffman | Kelly Schnure | Lynn L. White |
| | Charlene Huff | Emily Schwanke | Donald N. Wilver |
| | Christina Jordan | Damon Segraves | Ji Young Yang |
| | Stephanie King | April Shearer | Kayla Yaw |
| | Jan C. Kirby | Alexander Shirk | |

FRIENDS OF SUSQUEHANNA HEALTH

Includes all contributions not listed in other giving levels. These gifts were made from **September 1–December 31, 2011.**

| | | |
|-------------------------------------|------------------------------------|-------------------------------------|
| Anonymous (4) | Clinton and Mary Campbell | Richard and Patricia Erhard |
| Kathryn S. Alberts | David C. Carrington | N. Douglas Erickson |
| Louis P. Anastos | Catherine Casantini | Gerard and Doris Eschbach |
| Ellen M. Anderson | Daisy Case | Kristin and Jonathan Evans |
| Alice J. Andrews | Beth A. Caviston | Matthew C. Farrand |
| Wanda M. Andrews | Ron and Rosie Cimini | Louis and Janet Felicetti |
| Jean M. Arrigoni | Samantha Clark | Barbara J. Felty |
| Elizabeth L. Ashley | Mel and Fran Clausen | Elvira Ferraro |
| Barbara J. Atwell | Lois M. Cohen | Mr. and Mrs. James Fetzer |
| Dennis and Linda Ault | Lillian B. Cole | Emil and Ruth Fischer |
| Chad and Mari Aumick | Carol S. Confer | James and Jane Fisher |
| Ken and Alice Bair | Luella E. Conrad | Sandra M. Flack* and Thomas R. Hill |
| John and Ann Balch | Brenda A. Cope | E. Lorraine Frantz |
| Cleonice E. Bates | Robert and Rosemarie Coppola | Judith G. Frazier |
| John Q. Beauge | Susan and Jim Cortright & | Betty J. Freeman |
| Jonas and Gertrude Beiler | Helen Cortright | Jennifer Freund |
| Beiter's Inc. | Carol A. Cowder | Friday Night Group at |
| Alice J. Bell and Wendy Bell Gibson | Diana G. Cox | Divine Providence Hospital |
| Robert & Brenda Bement and | Nancy P. Crane | Friedens Ladies Aid of |
| Patricia Cummings | Ardythe R. Cross | Friedens Lutheran Church |
| Dr. Mary Colleen Bennardi and | Sylvia Crossley | Michele Fry |
| Dr. Thomas Barberio | Terry and Carole Crouthamel | Charles Herlt, Jamie Fry and Family |
| Erin A. Bennett | Daniel E. Cruttenden | The Family of Barbara Gaugler |
| Diane Bernardo | John and Rose Czap | Marian L. George |
| Shuman and Patricia Bickel | Charles M. Davis HMC/USN/RET | Frank and Gladys Gerchow |
| Emily Bishop | Holly J. Dawes | Suzanne and William Gilbert |
| Thomas and Phyllis Boesch | Carol L. Deasey | Barbara Glunk |
| Marilyn R. Bohlayer | Mary C. Deitrich | Lisa Glunk |
| Katy A. Bottorf | Wendy S. Deller | Ana Gonzalez |
| William J. Bower | Bennett L. Derr | Charlotte B. Good |
| Al Boyer | Emily L. Dewire | GoodSearch |
| Kari A. Boyle | Andrew and Carol Dilatush | Lynda A. Grand |
| Christopher and Susan Branton | Larry and Connie Dincher | Ann Green |
| Julie Brennan | Anthony L. and Kathleen S. DiSalvo | Gloria Green |
| Glenn and Joann Brink | Donald L. Doty, U.S.M.C. Ret. | Rose A. Gregori |
| James and Lois Brown | Mary and Pete DuBois | Cynthia and Richard Greninger |
| Charles G. Bryant | Wayne E. Dunkle | Mrs. Sally Grieco |
| Robert Buckingham and Patty White | E. R. Kinley Jewelers | Francis P. Grimes |
| Paul M. Burkhart | Robert and Linda Eckenrode | Gerald L. Groover |
| Jonathan E. Butterfield | Patricia G. Egleston | Maria Gustafson |
| Kenneth and Debra Buttorff | Reverend Father Fidelis I. Ekemgba | Dale Haag |
| Evelyn A. Caldera | Dr. and Mrs. Joseph G. English | Mel and Barb Hall |

* = deceased donor

FRIENDS OF SUSQUEHANNA HEALTH

T. Max Hall III
 Scott and Tushanna Hamilton
 Stephanie D. Hanford
 Robyn Hannan
 Tammy E. Harris
 John and Wanda Harvey
 Patrick and Carol Harvey
 Gale and Joy Hawkes
 Thomas R. Heffner
 Joanne W. Heimer
 Shana B. Heimer
 David and Donna Heiney
 John D. Helminiak
 David C. Heyman, MD
 Wilbur G. Hicks
 Floyd and Sherre Higley
 Lonnie and Linda Hill
 William T. Hill
 Hiller Albert Design Group
 Minas and Haritomeni Hiras
 Elizabeth J. Hoopes
 Edgar Horne
 Horsepower Harley Davidson, Inc.
 Employees
 Elina N. Huertas
 Alfred R. Huff
 Mabel L. Huggins
 Betty and Noah Hummel Jr.
 Bernard Imrisek
 John and Margaret Irwin
 Stephanie A. Jackson
 Jersey Shore High School Key Club
 Margaret and Deb Jones
 Shelly F. Karschner
 Margaret L. Kaup
 Rosetta C. Keefer Estate
 Norman and Catharine Keene
 Carl and Christy Kephart
 Keystone Data Systems, Inc.
 Jo Ann Kinney
 Theresa Konkle
 Albert L. Koons Sr.
 Wanda Korb
 John and Joan Kost
 Myra E. Kovalak
 Suzanne D. Krause
 Amy J. Kriebel
 Helen Laidacker
 Dick and Jo Langer
 Elliott and Patricia Langley
 Larson Design Group
 Donna Lehet
 Scott and Diane Leinbach
 James C. Leone
 Mr. and Mrs. Robert E. Leutze
 Rebecca A. Lewis
 Liberty Mutual Give With Liberty
 Employee Donations Program
 David E. Liddick
 Robert E. Little
 Charles and Donna Long
 Eleanor L. Love
 Loyalsock Girls Soccer Team
 Grace L. Lunger
 Joan S. Lyons
 Chris and Creighton MacGill
 Mr. and Mrs. Leonard Mahosky
 Michael and Sally Maneval
 Jennie M. Marino
 Anne A. Marmo
 Melissa A. Martens
 Kim Maser
 Harold and Linda Maxfield
 Gary L. Mayers
 Dr. William C. and Beverly H. McCauley
 Mary F. McGaughey
 Shane McGaughey
 Portia Ann McGowan and
 Portia Ann Poleto
 Jean W. McKernan
 Robert and Janet McManigal
 Ethel T. Melvin
 Joseph and Patricia Merrick
 Ann F. Miller
 Charles and Jane Miller
 Craig and Georgette Miller
 David and Adrienne Miller
 Michael and Linda Miller
 Montoursville Girls Soccer Team
 Donald J. Morgandale
 Dorothy M. Morris
 Crystal M. Moyer
 Muncy Valley Hospital Skilled Nursing
 Unit (CAT Members)
 Patricia A. Neely
 Elese D. Nestlerode
 Neville Clothier
 Anson and June Newcomer
 Helen J. Newlen
 John and Paula Neyhart
 Israel and Janet Nolen
 Frank and Phyllis O'Dea
 Jennie T. Obremski
 Shirley Ogden
 Mr. and Mrs. W. Carey Ohl
 Mary Ellen Parks
 Cathy Paulhamus
 Emily M. Paulhamus
 Marilyn L. Pautz
 Ruth J. Payne
 Thomas and Christel Payne
 Dorothy J. Peirce
 Dr. and Mrs. John A. Pellegrino
 Bruce and Gwen Penuel
 Arlene Perlach
 Vic and Debbie Perry
 Mary C. Piccolo
 Robert and Mary Jane Pierce
 Mr. and Mrs. Charles M. Plankenhorn
 Nancy E. Ploppert
 Kathryn E. Poust
 Bonnie S. Probst
 Doris J. Probst
 Bill and Mel Purdy
 Patricia J. Rambo
 Thomas J. Rankey
 Judy and Wolfgang Rast
 Anita E. Raudenbush
 Delores A. Reichart
 Lawrence P. Reidy
 Mr. and Mrs. Thomas J. Reimensnyder
 Joyce L. Rhodes
 Darwin and Gloria Ann Rightmire
 Jane S. Rishel
 Robert F. Snyder Post #6755 VFW Ladies
 Auxiliary
 John and Betty Rosencrans
 Patricia G. Rudy

Saint-Gobain Corporation Foundation
 Saint John's - Newberry United
 Methodist Church
 Vesta E. Schach
 JoAnn and Frank Schemery
 Shirley W. Schively
 Theresa M. Schneider
 George B. Seyler
 Kathleen M. Shafer
 Dr. Mohammad Shafique
 Aubrey N. Shaner
 Susan A. Shipman
 Dr. Margrit M. Shoemaker
 Mrs. Marilyn Short
 Emily H. Shultz
 Phyllis J. Sieber
 Christine and Walter Sinatra
 Raymond and Patricia Smith
 Suzanne H. Smith
 Randall and Floann (DeRemer) Snyder
 Tammy J. Sortman
 South Williamsport Boys
 Varsity Soccer Team
 Gayle A. Spadaro

Adrienne Spring/
 Colton Myers Wedding
 Mary V. Stolz
 Mr. and Mrs. Kim R. Stout Sr.
 Mary and Thomas Strunk
 Frank and Rosemary Sullivan
 Jeanette Swisher
 Barbara W. Taber
 Mr. and Mrs. William N. Taylor
 John J. Taylor III
 Mrs. Doris T. Teufel
 Ronald and Carolyn Cohick Thompson
 Doris E. Thorson
 Tiadaghton Quilt Guild
 Dorothy and John Tilburg
 Harry S. Trump
 Nanci M. Turker
 Dale and Dotty Ulmer
 Jay Utter
 J. Michael and Monica Vaccaro
 Kathleen and Thomas Veseleny
 Faith G. Vogt
 Anita & Joe Vollmer and
 Crystal Gornati

Patricia and Jerry Wagner
 Donald L. Walton
 Vivian G. Welch
 Jennifer E. Welliver
 William N. Welliver
 Robert and Barbara White
 Thelma White
 Norman and Ann Wilcox
 Sharon A. Wilkinson
 Melissa and Larry Williams
 Williamsport Area Women's
 Democratic Club
 Williamsport High School Class of 1957
 Luncheon Ladies
 Mary M. Wilson
 Donald A. Woolever
 Naomi L. Woolever
 Yoder's Parking Marking
 Harold C. Yost Jr.
 Chris A. Young
 Dennis and Mary Lou Youse
 Christine and Leroy Zalewski
 The Zeigler Family



Pediatric Unit Benefits from Holiday Donations

Members of the Fraternal Order of Eagles - Williamsport Aerie #970 are committed to Susquehanna Health's Pediatric Unit. For more than 10 years they have donated toys, games, dolls, puzzles, televisions, DVD Players/VCRs, stuffed animals, etc. at Christmastime. This year Michael Hook and Diane Ogden delivered more than \$2,000 worth of gifts for the staff to hand out to sick children and to also have on hand for the children to play with while they are being cared for in the hospital.

DONOR

spotlight

ARTIST FLORENCE PUTTERMAN

Through her foundation, **Florence Putterman**, 84, of Selinsgrove, donated twelve pieces of her original artwork to Project 2012. The work is valued at \$10,000, but she hopes those who see it will appreciate an even higher value.

“I think it’s important, and I know this from experience, that when you are in a hospital and not feeling well, you don’t want to be looking at something dreary or that doesn’t speak to you,” says Florence. “When you see something that’s interesting and warm and colorful, that can really lift your spirits.”

Inspired by her own hospital experiences, she decided to offer a selection of the prints she has created over the years to be used in hospitals and other nonprofit settings. Since she began donating her artwork 10 years ago, she has received many thanks from individuals who have found inspiration and joy in her work.

“I love doing this; it’s very rewarding. I have given my work to be used at locations all over the United States, and I have gotten a lot of good thoughts from different people over the years,” says Florence. “It is nice to have these pieces out where they will be seen and enjoyed.”

Florence got a late start to her art career. As a young woman growing up in Brooklyn, she was discouraged from pursuing her passion. Though she dabbled over the years, it wasn’t until her forties, when she and her husband moved to Milton, PA, to build a shoe factory, that her hobby grew into something more. She took art classes at Bucknell University and The Pennsylvania State University, earned her MFA from Penn State and became an art instructor at Susquehanna University.

Thousands of paintings, sculptures and prints later—she continues to create original work today—the former art instructor has been featured in more than 100 solo art exhibitions at museums and art galleries around the world and has gained a reputation as a postmodern painter and printmaker.

Look for Florence’s work, featuring hearts, flowers and landscapes, throughout Divine Providence Hospital and in the new Susquehanna Tower.



Local Artists' Work Enriches Project 2012

With Project 2012, nearly 400 pieces of art are displayed in renovated and newly constructed areas of all three of Susquehanna Health's hospitals. What makes the collection unique is that artists from within a 50-mile radius of Williamsport created every piece.

"It's thrilling to have local artists represented. We have a thriving art



community that includes multiple generations of artists," says **Roger Shipley**, Lycoming College Emeritus Professor of Art, who serves on the art committee assembled by Susquehanna Health President and CEO Steve Johnson in 2007.

Roger, **Sister Ann Marie Paul** and three other community artists and art enthusiasts identified and reviewed the work of more than 150 artists from the community and visited more than 30 studios. In addition to an appeal to the

community, they often discovered new artists through other artists.

"As a committee, we wanted to include original artwork, pieces of good quality that would be inspirational and healing, influential and informative, but not too edgy," explains Roger. "We were looking for artists who were established and had more than just one or two pieces we could review."

Leslie Watkins, president of The Art Partnership, made the final selections to keep the process impartial. About 75 percent were selected from existing works including paintings, photographs, sculptures, textile pieces and others. The other 25 percent were commissioned. Many of the artists offered their work at a discount or donated additional pieces to the project.

Many of the pieces depict scenes from nature including recognizable local venues. In the atrium outside the conference center in the new Susquehanna Tower, a large metal sculpture by Mike Patterson reflects the movement of the Susquehanna River. This theme is carried out in many ways throughout the building.

Other notable pieces can be found throughout the three hospitals of Susquehanna Health. In the Healing Garden at Williamsport Regional Medical Center there is a bronze sculpture of Joanne "Johnny" Lamade, the first female board member for then Williamsport Hospital, sculpted by

Zenos Frudakis. A unique textile piece depicting good health was created by nine area women and is featured in the radiation oncology unit. Pictures of children and scenes from familiar stories provide a pleasant conversation starter in pediatric waiting areas in Divine Providence Hospital's same-day surgery area, while crosses made from local hardwoods grace the lobby of Muncy Valley Hospital, depicting Susquehanna Health's faith-based healing mission.

The only exception to the 50-mile rule was the work of sculptor Talley Fisher of the Rob Fisher Studio. Talley created the dramatic ceiling installation at the entrance of Williamsport Regional Medical Center. A national search for that commissioned piece led the committee to Bellefonte, 62 miles away. There's still a nice local connection, though, because Talley was born at Williamsport Regional Medical Center.

"This has been a wonderful opportunity for our committee to work together. It has been rewarding to see the work of so many artists in the community and to know that these pieces will be a source of inspiration to so many," says Roger.

"The committee and the project team have been amazing to work with," adds Leslie. "There is an extraordinary commitment here that is a benefit both to the patients and the local art community."

with
Dr. Hoffman



Dr. Michael Hoffman

is an orthopedic surgeon at Susquehanna Health. He is a graduate of the University of Utah School of Medicine and completed his residency at Dartmouth/Hitchcock Medical Center. Dr. Hoffman completed a fellowship at the University of Utah and is board certified in orthopedic surgery.

Q. What makes the new Joint Replacement and Spine Center a good environment for recovery and rehabilitation following surgery?

A. Everyone involved in the care of joint and spine patients looked at the unique needs of these patients and their barriers to recovery and designed the unit to address them.

Because the unit is exclusive to joint and spine patients, caregivers will interact more to collaborate on each patient's care. This is ideal for incorporating best practices and clinical pathways to provide the best outcomes and highest standard of care for our patients.

Also unique to this environment is the camaraderie fostered among patients when they are together in a unit. They often meet each other in class prior to surgery. Then they will be together during rehabilitation and become a great support to one another.

Q. How do you describe the "wellness" approach on this new unit?

A. The environment we've created is more like home than like a hospital, and we will treat patients more like they're at home. There are special chairs so they can spend more time out of bed, and instead of hospital gowns patients will wear T-shirts and other sports attire.

A lot of recovery is based on mindset. The majority of our orthopedic and spine patients are healthy people who have one isolated problem. Their treatment as a "well"

person puts the emphasis on their recovery and rehabilitation so they are immediately working to regain mobility and independence at an appropriate, measured pace. Our goal is to get them back to their lifestyle or, with the improvements of surgery, an even better lifestyle.

Q. What features of the unit do you see having the greatest impact?

A. Every feature is designed to make an impact starting with the education, training and preparation that patients receive before surgery.

The nurses' stations are very close to the patients for quick assistance, and each patient has a private room with walk-in access to its own bathroom. The 24 private rooms also have space for family or a coach to be there and support the patient. The rehabilitation gym, with its wall of windows, is easy to access on the same floor as the patient rooms.

Q. Has the new unit impacted caregivers?

A. Building a unit like this made everyone take a closer look at how they do their jobs—from the patient transporter to nurses and social workers, therapists and the surgical team—and it gave everyone an opportunity to provide input to improve the process and make sure the quality is there to help patients have the best possible outcomes. That input and ownership of the process elevates the structure to make each team member more effective.

Introducing the HANA table

Now at Susquehanna Health orthopedic surgeons use the HANA table, which is specially designed to improve the outcomes of anterior approach hip surgery, along with several other orthopedic procedures.

This revolutionary table allows a surgeon to precisely position a patient's hip for surgery and then accurately position the replacement

components for proper hip joint mechanics. Special instruments and implant components allow for less tissue disruption by separating the muscles at the hip rather than cutting

them. Overall, the patient benefits from a faster recovery, less pain, a smaller incision, less blood loss and less scarring. The table is also used for pelvic fractures and hip revisions.



Recovery is the Main Event at the Joint Replacement and Spine Center



A photograph of the River Walk is superimposed on a large white board prominently displayed outside the bright, spacious gym in Susquehanna Health's new Joint Replacement and Spine Center. It's a symbol of the journey each patient must make to recovery.

"Rehabilitation following major orthopedic surgery can be challenging. We want to put the patients' focus on moving forward to reach daily goals so they can keep their recovery on track and return to their lifestyle as quickly as possible," explains **Lori Beucler**, administrative director of Perioperative, GI and Orthopedic Services.

With each goal achieved, patients will celebrate as their icon magnet moves forward along the River Walk path. They will progress until they can continue their journey at home.

Supporting them in their journey is a staff of caregivers and therapists dedicated solely to the care of orthopedic and

spine patients. In addition, patients can designate a coach from their family to be trained to assist with their care and to be a source of encouragement and support especially as recovery continues at home.

Everything on the unit is designed to motivate, from the patient's attire—T-shirts, shorts and sweats—to activities such as baking in the fully equipped occupational therapy kitchen and the gym's beautiful views of the mountains. Even the specially designed ergonomic chairs in each of the 24 private rooms prompt patients to spend more time out of bed.

Before surgery both patient and coach attend educational sessions to prepare for everything from surgery to hospitalization and recovery at home. A network of caregivers ensures that everything necessary is in place before surgery so the patient can set and meet specific recovery goals and return home following hospitalization without unnecessary delays or interruption to their therapy.

"This wellness model of recovery is a unique concept for the region," explains Lori. "Each patient will have a tailored plan for recovery with established daily goals and criteria. The emphasis here is truly supporting the patients as they reach their goals."

Coming Soon

Look for details about Meet and Greet sessions with our orthopedic surgeons as well as tours of the new Joint Replacement and Spine Center beginning in April.

TRIBUTES: IN MEMORY OF

In Memory of Jack R. Alberts

Kathryn S. Alberts

In Memory of Robert AshleyElizabeth L. Ashley
Hoffman United Methodist Church**In Memory of Terrence L. Baier**Raymond and Tammy Baier
Judy Dugan
Jeanne M. Jensen
Eileen (Bower) Major
Calvin L. McHenry**In Memory of Patricia J. Baker**

Rosalie F. Kaleda

In Memory of Kent T. BaldwinDan Allison
Discovery Machine, Inc.
Anthony J. Donofrio
Pennsylvania College of Technology
David and Heather Pflieger
Fred and Marian Schaefer
Kathy S. Wurster**In Memory of Edna L. Bastian**

Bruce A. and Joanne K. Smith

In Memory of Betty Clare Bell

Alice J. Bell and Wendy Bell Gibson

In Memory of Dorothy C. Bixler

Mary V. Stolz

In Memory of Margaret B. BodnerBlanche M. Ambrogetti
Louise C. Bernardi
Shirley W. Ferreri
Leonard and Ruth Hritzko
Joann F. Miller
Delores M. O'Donnell
Suzanne M. Woika**In Memory of Boinski and Mahosky Parents**

Mr. and Mrs. Leonard Mahosky

In Memory of James J. BressiCharles, Karen and Michael Aber
Jim and Barbara Ault
Mike and Judy Caprio
Connie E. Michele
Thomas and Ina Walker**In Memory of William L. Bryan**

Brodart Social Club

In Memory of Paul A. BryantDavid and Gail Battaglia
Linda S. D'Amario
Dorothy J. Toner**In Memory of Karen L. Buck**

Geisinger Health System

In Memory of Joseph S. Carnevale

Sheila C. Hubbard

In Memory of John J. Catino

Nicholas and Carol Catino

In Memory of Jay E. ChaapelClarence H. Carl
Central Pennsylvania
Funeral Directors Association
Cheryl and Dale Chapman
John* and Lois Cox
Joseph and Joni Keller
Koroseal Wall Protection System and
Walltalkers
Bill and Veronica Muzic
PRIMUS Technologies Corp.**In Memory of Melva Freed Choate**John and Karen Blaschak
Donna L. Decker
Jody and Lance Dickinson
Gregory H. Freed
Shirley A. Fry
Joan L. Guidi
Lorraine A. Lecce
Robert and Janet McManigal
Dr. and Mrs. Young W. Park
Mr. and Mrs. John E. Person Jr.
Jeanette F. Phillips
David J. and Maggie R. Roche
Beverly C. Simek
Jeff and Jeri Sims
Spartan Chemical Company, Inc.
Albert and Judy Styrcula
Williamsport Country Club
Ladies Golf
In Memory of Betty Louise Clark
Dan Clark
Scott and Cathy Clark

Mr. Theodore S. Clark

Tim and Linda Clark
Harry and Janice Gates & Family
Edward and Peggy Held
Scott, Mary, and Levi Held
Theodora Hendershot
Jim and Janet Hollenbaugh & Family
Sandra Jarecki and Family
Rose and Randy Kopelcheck
Linda and Ted Szuhaj
Joseph and Mary Waldman
Bob Zwald Family**In Memory of Kenneth L. Clark**

Brodart Social Club

In Memory of Edward W. Claudius

Elaine C. Payne

In Memory of Clara E. Cohick

Ronald and Carolyn Cohick Thompson

In Memory of Rose G. ConnollyTom and Judy Afilani & Family
James and Tana Bailey
Marian Bubb
Mary and Dan Cassidy
Beverly J. Ceraso
Kristin and Jonathan Evans
Kelley and Charles Imbro
Tom and Kathy Kocher
Donna and Jim Maule
Eric and Holly Olson & Judy Nesbitt
Grace Sheehan
Eleanor R. Smith
Valley AG & Turf, LLC
Melissa and Larry Williams
Tony and Rita Winterer**In Memory of Robert E. Conrad Jr.**Steve and Debby Conrad
Sherry L. Ewing
Elva, Larry and Diane Hoch
Paul and Suzanne Nyman
Edward and Ruth Weeks**In Memory of Alma P. Corey**Ruth C. King
The Maiolo Family

In Memory of Leah A. Crisman
Margaret H. Brimmer and Family
Dr. and Mrs. Richard N. Shatz

In Memory of Virginia I. Cullen
Merrill and Dorothy Dodge

In Memory of Margaret H. Davidson
Sterling H. Davidson

In Memory of Linda E. Decker
Robert and Christy Fish
Cindy S. Norman
E. Gail Norman

In Memory of Harry E. DeRemer
Randall and Floann (DeRemer) Snyder

In Memory of Ida DeRemer
Randall and Floann (DeRemer) Snyder

In Memory of Robert Trauger Derr
Altoona District Ministerium Pastors
Stella L. Bennett
June A. Connolly
Alice M. Crocker
Mary C. Day and Mr. and

Mrs. Russell E. Day & Family
Sandra L. Derr
Cynthia and Wally Helt
Donald and Sharon King
Grace E. McCabe
Maraleane M. Murray
Mrs. Ruth A. Oberfeitingner
Jon L. Osgood
Mr. and Mrs. David G. Painter
Madeline R. Saye
V. V. Trauger and Kathryn Oppedahl
Carl F. Ulmer
Rebecca Weimer

In Memory of Kline A. DeWire
John and Sue Young and
Young Industries

In Memory of Raymond L. Dick
Kellogg's
Tim and Charlotte Waclawski
Ann L. Watson

In Memory of Peggy J. Donahay
Stanley & Janice Donahay,
Bill & Nancy Donahay, Donna &

Terry Wenker, Walter & Alma Miller,
Sharon & Kevin Schrack
PRIMUS Technologies Corp.
Larry and Karen Shields and
Betty Brooks
Carolyn F. Stahl

In Memory of Roseanna Ekemgba
Reverend Father Fidelis I. Ekemgba

In Memory of Tammi Jo Emel
Anne and Steve Walizer

**In Memory of Lester C.
"Bud" Englert Jr.**
Mr. and Mrs. Edward Burger
Deborah A. Michaels
Pennsylvania College of Technology

In Memory of Gail L. Feese
Phyllis Feese-Guyette and
Curtis Guyette

In Memory of Lamont D. Feigles
The Lovett Family - Michael, Roylee,
Mike, Matt, Meghan, and Marc

In Memory of Sandra L. Feigles
The Lovett Family - Michael, Roylee,
Mike, Matt, Meghan, and Marc

In Memory of Alberta P. Fisher
David and Joan Biehler
Marc and Mary Cooley
Thomas and Kathleen Detwiler
Mary A. Fleming
Theresa Jacobs
Ralph L. Lukens Jr.

Doris F. McCoy
Jack and Joan McKee
Jennifer W. Means
Joyce H. Mix
Jennie T. Obremski
Henry and Eleanor Perciballi
Janet A. Poole
James and Debra Schneider
Bernard L. Springman
Transitional Living Centers, Inc.

In Memory of Gordon L. Fox
Lauretta Baumgartner
Gary and Laura Corwell
Hemlocks Hunting Camp

D. Jane Lomison
Grace F. Sheets
John and Carol Stone
Williamsport Municipal
Water Authority

In Memory of Mary M. Fox
Gene and Linda Bigger
Employees of Fox's Family Restaurant
The Farrar Family
Linda S. Frakes
Adam and Lisa Sonnen

In Memory of Charlene V. Frank
Harry E. and Jeanne B. Ritter

**In Memory of Ragnar W.
"Tex" Franzen**
Norma B. Franzen

In Memory of Marguerite F. Fredericks
Glenn and Arlene Ardrey
Mr. and Mrs. James Bush
Anthony and Joan Cipriani
Susan and Jim Cortright &
Helen Cortright
Donald R. Flick
Kathy M. Gehr
John K. Gorsline
Tim and Sandra Hughes
Kenneth L. Hunter
Bernard and Marlene Kibler
L & M Music Co./Miele Inc.
Albert E. Lambert
Mom and Dad, Aunt Kay, Uncle Craig,
and Cousin Sue

In Memory of Kay Freezer
The Harold Houseknecht Family

In Memory of Gail S. Fritz
John and Joy Aderhold
Ms. Ida M. Cillo, Steve Cillo and
Family, Nick Cillo and Family, and
Donald Cillo and Family
Alice I. Schneider

In Memory of James A. Fry
Charles Herlt, Jamie Fry and Family

TRIBUTES: IN MEMORY OF

In Memory of Sarah J. Fry

Wilbur M. Emig
Richard and Carol Greene
The Viau Family - Ellen, Erika, Heidi,
and John Mark

In Memory of Raymond F. Gair

Mike and Sonnie Barclay
Family of Jim Rupp
Kay Major & Family and Ted
Harry S. Miller
Rick Mason and Anne Rice
Dean and Kathy Pepperman
Steep Hollow View Inc.

In Memory of Thomas George

Marian L. George

In Memory of Margaret A. Godfrey

John and Karen Blaschak
Mr. and Mrs. Albert A. Clapps
Catherine Steuer Cooper
Ron and Jeanne DeFeo
Betty M. Diehl
Linda S. Frakes
Richard W. and Joan M. Gilbert
Dr. William G. Hamm and Family
Chuck and Annette L. Houck
Patricia M. Leahy
Ann and Kenneth Lundy
George and Lucy Moyer
Adeline L. Nardi
Mrs. William B. Pfeiffer
Missy and Dave Plankenhorn
Brian and Kathy Rutter
Ruth E. Smith
Jim* and Lillian Stopper & Diane and
Dave Brown
Tory Leather Company - Ron and
Rosie Cimini
Eileen and Irv Vaughan
Eleanor L. Whiting

In Memory of Janice Gonzalez

Ana Gonzalez

In Memory of Verna Dean Green

Ann Green

In Memory of Doris Louise

Greenawalt

Aunt Doris, Lynda & Jim,
Judy, and John

In Memory of William C. Haberstroh

Paul and Terri Regopoulos

In Memory of C. Esther Hagar

Marieva Williams

In Memory of Douglas C. Hall

Mr. and Mrs. Richard W. Hall

In Memory of Joan Marie Hedgcock

Helen A. Barrington
Jean A. Dickey
Holly and Tom Tagliaferri & Family

In Memory of Florence J. Helminiak

John D. Helminiak

In Memory of William E. Henry

Dr. and Mrs. Joseph G. English

In Memory of Charles Herlt

Charles Herlt, Jamie Fry and Family

In Memory of James L. Hetner

Citizens Fire Company #2
Steve and Debby Conrad
East Lycoming Education Association
Don and Carol Peace
Lawrence Rodgers Jr.
Williamsport Rural Mail Carriers
John and Charlotte Zalonis

In Memory of Daniel E. Hill

Daphne W. Hill
Mr. Steven T. Shearer and
Dr. Heather H. Shearer

In Memory of Vickie D. Hill

Employees - Past and Present of
Glamorise
Barb Holmes and Bob

In Memory of Doris P. Hollenbach

Construction Specialties, Inc.
VFW Post 3428 Ladies Auxiliary

In Memory of Doris C.

“Dodie” Holmes
Bill and Nancy Holmes

In Memory of David William Hood

Lynn Richards

In Memory of Grace H. Housel

William G. Ritter

In Memory of Charles M. Howerter

Robert F. Anderson
Heloiza A. Asaro
Barbara and Maurice Clouser
Joseph W. Coburn IV
Janet E. Copenhagen
Arlea Gallagher
Mr. and Mrs. Mark L. Howerter
Gene and Arlene Ketcham
Norton and Clare Madigan
William and Rachel Martz
Minisink Valley High School
Special Education Department
Nor-Cen-Penn No. 96 - National
Camping Travelers
Lee and Barbara Pugh
Mrs. Ruth L. Reigle
Cindy L. Rodriguez
Edward and Catherine Whitman

In Memory of James W. Huling

Jodi L. Huling

In Memory of Evelyn I. Irwin

Mr. and Mrs. Richard L. Moyer
Bonnie M. Powell
Karl and Kathy Wolfe
Woolrich Employees
Beneficial Association

In Memory of Jack

Linda M. Henry

In Memory of Guy F. Jacobson

Gregg and Donna Kishbaugh

In Memory of Stanley Jedrzewski

Carlene H. Hafer
Ron and Judy Rock

In Memory of Waltraut

“Wally” Jelsma
Anna DeHart
Jim and Dorothea Doud & Pat Rosner
Wiebe Jelsma
Jean E. Nolan
Annie P. Rosner
St. John’s United Methodist Church &
Sunday School at Grover

Tom and Peggy Watkins

In Memory of Camille E. Kane
The Hoebener Family

In Memory of Martha J. Karschner
Lorraine B. Sheets

In Memory of Robert C. Karschner Sr.
Muncy Bank & Trust Company
Employees

In Memory of Elizabeth K. Kehler
Mr. and Mrs. Gayle N. Phillips

In Memory of Shirley F. Keister
Earl E. Keister and Family

In Memory of Ruth L. Kilgus
Allan and Jodi Schwenk

In Memory of Valeria J. Kuhns
Mrs. Helen K. (Greenaway) Kuhns,
Skip and Ann Greenaway, Nancy
and Randy Street, and Tish
(Greenaway) Rae
VFW Post 3428 Ladies Auxiliary

In Memory of Robert T. Kuntz Sr.
Anonymous

In Memory of Joanne G.
"Johnny" Lamade
Meg Lamade Beckerman
Anne L. Pikolas

In Memory of Ray E. Lamey
Michael and Connie Hamilton
Bill and Jane Kerstetter
Kim and Jay Lamey

In Memory of Doris I. Leathers
Harry E. and Jeanne B. Ritter

In Memory of Marie C. Lehman
Ellen E. Brownlee
Thomas and Janet Eck
Mrs. Mary Kulla
Jeanne Lehman, Toni and Marty
Henry, Vicki and Dave Blackburn,
Terri Fleming and Cheryl Shively
Glenn S. Lehman

In Memory of Robert
Williamson Leidhecker
Jean Chapman

Joseph B. and Lillian M. Gehret
Charles and Alice Hall
Michael and Jan Smith

In Memory of Howard Lunger
Grace L. Lunger

In Memory of Karen Mancini
Elliott and Patricia Langley

In Memory of Amelia Manley
Ruth Pratt

In Memory of Mary A. Mapes
Barbara E. Croteau
L-3 Communications Electron Devices
Linda D. Probst
Jim and Lillian Stopper & Diane and
Dave Brown

In Memory of Tracy M. Mariano
Kevin and Lois Wade

In Memory of Harriet F. Matlack
AutoTrakk, LLC
Dorothy J. Barner
Harland and Carole Bergstrom
Cramer Brothers Band
Nancy and Doug Deibler
Mike and Nancy Dorman
Nora E. Matlack
Richard and Stephanie Matlack
James and Amy Miller
Frances M. Noviello
Jim and Terri O'Connor
Presbyterian Senior Living
Margaret G. Roskowski
Clair and Sandy Souter
Raymond and Patricia Stiner
Jim Thomas
Ann L. Watson
Marshall J. Winters

In Memory of Richard J. and
Rose M. Matteo
Vincent J. and Susan E. Matteo

In Memory of Mabel D. McCloskey
Gene McCloskey

In Memory of Robert W.
McCullough Jr.
Mary and Pete DuBois

In Memory of Fannie F. McKee
The Patrizio Family
Thelma White

In Memory of Gerard H.
"Jerry" McQuillen Jr.
Betty A. Anderson
Carl and Jeannine Cohick
Mike and Nancy Dorman
Steve and Dori Eck
Elion, Wayne, Grieco, Carlucci,
Shipman, Dinges & Dinges, PC
Paul and Anne Friel
Eileen Boring, Rosemary Dincher,
Mary Lou Goehrig, Jean Haas, Kathy
Habel, Sandy Kase, Bernie Lutz
and Diane Murray
George and Gwen Knerr
Lycoming Valley Middle School Staff
Paul and Taci McGee
The McQuillen Family
Mr. and Mrs. Ardell McQuillen
Nannette L. Rusczyk
Lewis and Charlotte Schreppel
The Breneisens, Woodsides, and Sones -
Gail and Marcia

In Memory of Denise E. Melvin
Joan S. Lyons
Ethel T. Melvin

In Memory of Evelyn F. Mertes
The Helminiaks - Marcus, Maria,
Rebecca, and Stephen

In Memory of Barbara A. Mileto
Grier Street Manor
Mr. and Mrs. John G. Herbein

In Memory of Irene M. Miller
John P. and Judy L. Maietta

In Memory of William R. Miller
Patricia E. Miller
Amanda and Ron Wallace

In Memory of Laurie Millheim
Dale and Dotty Ulmer

In Memory of Hilda A. Mitchell
Pat A. Council
Jay and Janice Lose

Your Contributions at Work:

Linear Accelerator Provides Precise, Powerful Cancer Treatment

Donations helped to fund the **Trilogy Linear Accelerator, which brings power, precision and versatility to cancer care at the Susquehanna Health Cancer Center.** This state-of-the-art radiation treatment machine uses electronic image guidance technology allowing doctors to see exactly where tumors are and to fine-tune powerful radiation treatments to eliminate cancerous cells while protecting healthy tissue to reduce side effects.

Located in a specially designed room on the ground floor of Divine Providence Hospital, the radiation treatment

machine gives doctors versatility to provide high-quality treatments for most types of cancer. Highly trained therapists create a calming environment for the patients while making their treatments comfortable and efficient.

Having this advanced technology in our community is a tremendous benefit to many residents of our region. The capabilities provided by the Trilogy allow patients to avoid traveling several hours for their daily treatments and keep them close to home and their support team.

spotlight

Consistency, Professionalism Earn Patient's Confidence in Cancer Care

For several years **Vernon Gibson**, 59, and his urologist, **Dr. Glenn Bloiso**, monitored Vernon's enlarged prostate, even treating it with transurethral microwave therapy.

When Vernon's PSA (prostate-specific antigen) levels spiked in 2010, Dr. Bloiso performed a biopsy and confirmed that Vernon had prostate cancer. After carefully considering his options, Vernon had his prostate surgically removed in August 2010.

Just a little less than a year after his surgery, Vernon's PSA levels spiked again. This time Dr. Bloiso recommended precision radiation therapy.

"Dr. Bloiso was concerned that trace amounts of cancer cells remained. Rather than allow them to fester

and grow, he sent me for radiation treatment," says Vernon.

For 45 days, Vernon and his wife came to the Susquehanna Health Cancer Center at Divine Providence Hospital so he could receive precise, powerful radiation treatments from the Trilogy Linear Accelerator. His 8 am appointments typically took just 15 minutes, allowing him to be back to work by 9 or 9:30 am.

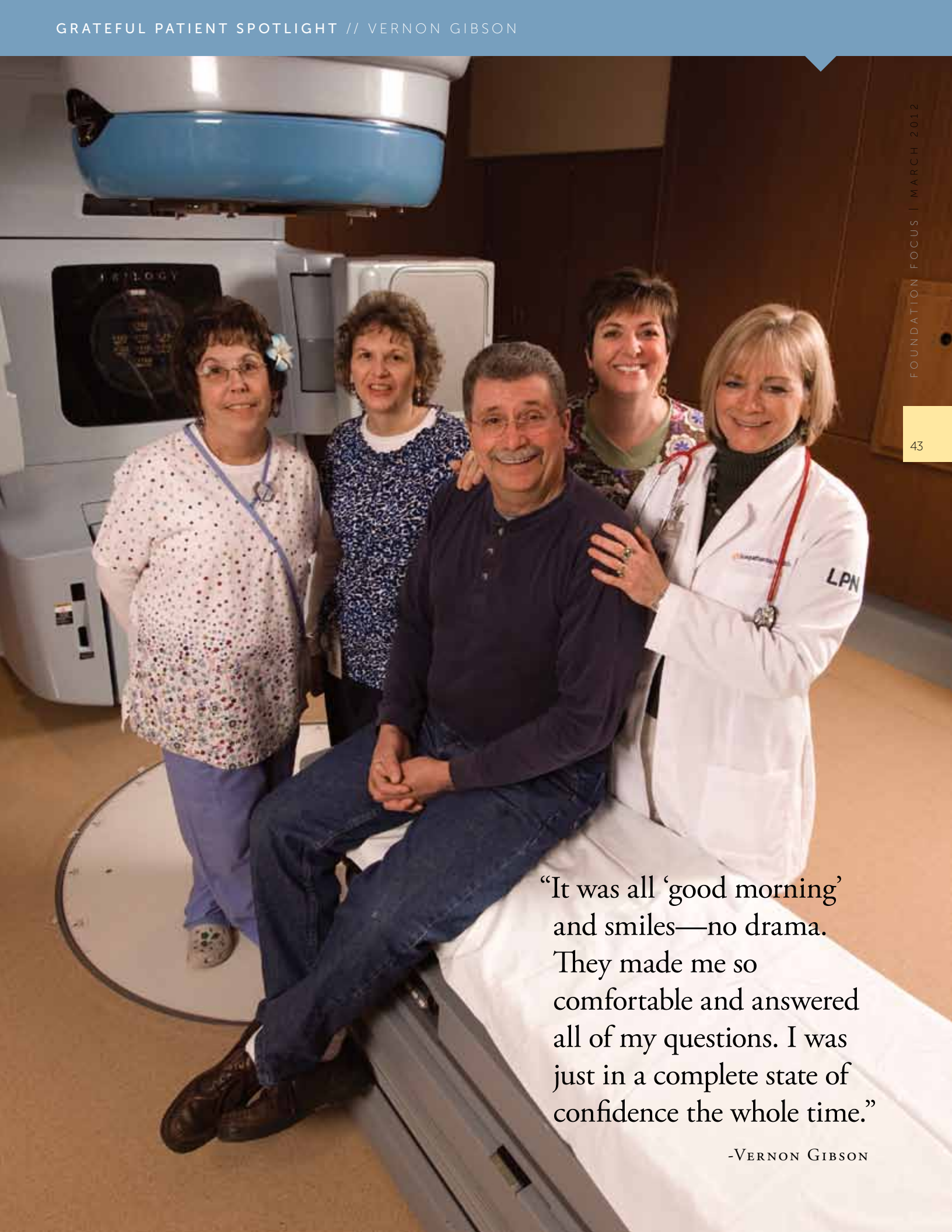
"It was so efficient. I used a bar code to check in and within a couple of minutes someone would come to the waiting area and take me back for treatment," says Vernon.

He says the machine looked a bit intimidating at first—like something from *Star Trek*—but the staff that worked with him quickly put him at ease.

"It was all 'good morning' and smiles—no drama. They made me so comfortable and answered all of my questions. I was just in a complete state of confidence the whole time," says Vernon.

What really impressed him was the consistency and professionalism of the staff. The procedure was exactly the same every time. He also appreciated the convenience of having weekly visits with **Dr. Kenneth Glaser**, his radiation oncologist, in conjunction with treatments to address any concerns or side effects.

Vernon's treatments ended in October, and in December he had a follow-up exam to confirm its effectiveness. He urges all men to be proactive with their prostate health because prostate cancer symptoms can often go undetected.



“It was all ‘good morning’ and smiles—no drama. They made me so comfortable and answered all of my questions. I was just in a complete state of confidence the whole time.”

-VERNON GIBSON

TRIBUTES: IN MEMORY OF

In Memory of Sarah Ann Morgan

John M. and Dortha A. Stoppa

In Memory of Judge Malcolm Muir

Robert Grumbacher

In Memory of Lee D. Myers

Eleanor L. Hanna

Loyalsock-Montoursville

Community Center

Charles and Hallie Luppert

Janice E. Myers

Keith and Betsy Smith

Mandon Jacob Watts

In Memory of Lynn**Pewterbaugh Neville**

Evelyn W. McCauley

In Memory of Zigmund L.**“O. B.” Obremski**

Jennie T. Obremski

In Memory of Joan M. Oliver

Michael and Connie Hamilton

Dave Oliver and Ann Watson

In Memory of R. Stephen Opp

Crawford Consulting Services, Inc.

Ron and Jeanne DeFeo

Nancy W. Foresman

Gail A. Hall

Edwina D. Hornberger

Steven R. Hunker

Raymond E. Kehrer Jr.

The Linderman Family

Robert and Esther McConnell

Carol L. McMurray

Patricia L. Michael

Malcolm and Carol Muir

Rodney and Connie Opp

Mary Robbins

Robert and Jill Stannert

In Memory of Lynn A. Overdorff Jr.

Keith and Pam Shenberger

In Memory of Dr. John C. Patchen

Mrs. Marie Patchen and Children

In Memory of James T. Payne

Ruth J. Payne

In Memory of Richard W. Payne

Thomas and Christel Payne

In Memory of Thelma “June” Perry

Susan Perry and Tom MacBlane

In Memory of Edith Peterson

Robert Conrad

PRIMUS Technologies Corp.

In Memory of Renee Lynn Pflieger

Chemcoat, Inc.

William and Rita Dailey

Mike and Karen Peacock

PRIMUS Technologies Corp.

Scott E. Taylor

In Memory of Calvin and**Freda Phillips**

Harold and Linda Maxfield

In Memory of Iva E. Phillips

Mr. and Mrs. Gayle N. Phillips

In Memory of Frank Piccolo

Mary C. Piccolo

In Memory of Nancy Lee Pinchot

Division of Instruction,

Maryland State Dept. of Education

Marcella L. Douty

Educational Testing Service

Friends from the Montgomery County,

Maryland, Math Office

Louis, Marolyn, Ed and Jonah Gusbar

Pamela S. Hartzell

Barbara N. Hartzfeld

John D. Helminiak

Sheila LoCastro

Donna Watts, Karen Ross, Marci Frye,

Bette Kundert, Kim Belling, Sara

Reed, and Debra Ward

Ilhye Yoon

Janice and Werner Ziegmann

In Memory of Harry L. Pittinger Jr.

Jack and Darlene Freezer

Gale and Joy Hawkes

In Memory of Ann L. Plankenhorn

Mom and Dad, Aunt Kay, Uncle Craig,

and Cousin Sue

In Memory of Prudence W. Poff

Mark and Patti Waldeisen

In Memory of Josephine F. Quinn

Sheryl E. Dunn

In Memory of Marcella Raemore

Mandon Jacob Watts

In Memory of Elizabeth A. Rankey

Thomas J. Rankey

In Memory of Iva O. Reeder

The Colberts

Leo Cowder, David Cowder and

Patricia Smeal

Janet A. Poole

Thomas J. Rankey

In Memory of Kenneth D. “Reiche”**Reichenbach**

Pam Cohen and Todd Benner

Geisinger Health System

Russell and Gail Henderson

Sandra J. Nelson

In Memory of Catherine M. Reidy

Lawrence P. Reidy

In Memory of Richard L. Retorick Sr.

Employees of Carter Machinery

Company, Inc.

Lisa (Retorick) Tinsley

In Memory of Robert E. Reynolds

Lucile W. Reynolds

In Memory of William R. Reynolds

Lucile W. Reynolds

In Memory of Jean C. Robbins

Donna Aucker and Friends at

Weis Markets

William E. Best

Donald and Nancy Devorris

Jack and Ruby Fisher

Nancy Gotschall

Bonita C. Heisey

Vern and Betty Kinney

Mike Kustanbauter and Dorothy,

Laurie, Andy and Boys, John and

Darl Simms & Family

Paul and Lennie Lefevre

Lycoming County Department of

Public Safety

Joan B. Nau

Mr. and Mrs. Gordon Smart & Family
Doris M. Smith

In Memory of Edna S. Rodgers
Anonymous

In Memory of Robert O. Rolley Sr.
Susan and Jim Cortright &
Helen Cortright

In Memory of Eleanor L. Rupert
Sam and Deb Bierly

In Memory of Linda M. Saar
Louise W. Jones
Tom and Kathy Kocher
Pennsylvania College of Technology
Dianne L. Perry

Richard and Edith Saar
Saul J. Rubin Barrel & Drum Company

In Memory of Sharon A. Saar
Larry and Dorothy Hartsock
Gloria M. Huyck
J. B. Gibbons Construction LLC
Mid-State Beverage Co. - Don and
Betty Jo Heim

In Memory of David E. Sanders
Thomas and Sheran Barone
Glatfelter Insurance Group
Dave and Cindy Machan
Mid Hudson Conference PWLS Inc.
Mountain Valley Conference
Pop Warner

Pop Warner of Burl County
Cheerleading Association
Raritan Valley Conference
Pop Warner Football
Sons of the American Legion
Squadron 273 Bloomsburg

In Memory of John A. Savoy
Carol Savoy and
John Savoy & Son, Inc.

In Memory of Marie L. Schell
John and Rosa Beattie
Theodore and Joan Solomon
Donald L. and Barbara A. Switzer

In Memory of Lee R. Schively
Shirley W. Schively

In Memory of Patricia L. Schon
Wanda Korb

In Memory of George R. Schramm Sr.
Janet M. Baltzley
Jack Beideman
Daniel and Jacquelyn Shifflet

In Memory of Earl L. Schultz
The Neighbors of Earl L. Schultz
Muhlenberg College Community
Seabrook House West Transitional
Living Facility

In Memory of Milton M. Scott
Williamsport High School Career
Technical Education

In Memory of Charles W. Shaffer
The William H. Buttorff Family
Citizens Fire Company #2
David and Holly Huyck
Independent Fire Company No. 1
Ruby E. Jenkins
Bill and Wanda Moran
Tipson Myers and Connie O'Donnell
James and Helen Smith

In Memory of Kurt Shannon
Commonwealth of PA Bureau of
Audit Employees

In Memory of Ann L. Shenberger
Keith and Pam Shenberger

In Memory of Fred Sheriff
Mr. and Mrs. Thomas M. Angier

**In Memory of Katherine
Woolever Shimer**
Naomi L. Woolever

In Memory of Thomas E. Shortledge
Mary F. Bennett
Mr. and Mrs. Gary H. Derr
House-Hasson Hardware Co.,
Persinger Division, Inc.

Mr. and Mrs. Eugene E. Johnson
David and Jennifer Lingenfelter
The Melissa and Bob Miller Family
Karen Neidrich

William and Deanna Rall
Blanche L. Smith
Larry and Linda Smith

Tim and Patty Walker
Arsilia V. Zimmerman

In Memory of Jack W. Smith
Anonymous

In Memory of Robert D. Smith
John and Mary Confer
Bill and Norma Griess
Edwina J. Moore
W. Herbert Poff III
Paul and Esther Watson

In Memory of William I. Steimling
Raymond E. Kehrer Jr.

**In Memory of George W.
"Bill" Strayer**

Gloria and Charles "Skip" Greevy
Dana and Doug Larson
Catherine and Clem Lombardi
Jack and Di Anne Sanford
James and Debra Schneider
Beverly L. Schweikle
Bernard L. Springman
Shirley M. Strayer and Kristi Eberhart
Allen and Mary Ellen Yearick

In Memory of Helen W. Swanson
Blaise Alexander Nissan, Inc. and
Family Dealerships
David and Carol Bresticker

In Memory of Ellen S. Taylor
Stephen and Corinne Waldman

In Memory of Virginia L. Theis
Stacey A. Burke
Ted and Cindy Dougherty
Fred and Trish Glessner
Lois M. Hollick
Miles and Edith Long
Michael A. Rampulla
Peggy E. Shaffer
Williamsport Heart Team

In Memory of Dorothy S. Thomas
Mary L. Dunphy and George B. Hill
Barbara and John Hunsinger
Williamsport National Bank Retirees

In Memory of Mary Louise Thomas
Barbara A. Miller

TRIBUTES: IN MEMORY OF

In Memory of Esther Marie Trump

Harry S. Trump

In Memory of Lynn M. Ulmer

Melissa D. Lundy
Bonnie J. Mitcheltree

In Memory of Caroline D. Umstead

Glamorise Foundations
Linda K. Shultz

In Memory of Pamela J. Utter

Patricia & Lionel Ezera Ohana
Friends and Family of the South
Williamsport High School: Mark
Shoemaker and Family, Julie and
Rich Murra and Family, The
Hutchins Family, Debbie Lord and
Family, Lisa Zaydon and Family, Lori
Roth and Family, Lori Harris and
Family, Joan Flook and Family,
Mike and Julie Charneskie and
Family, Jill Ulrich and Family and
Kathy Skyripk and Family

John E. Reidy
James and Debra Schneider

In Memory of Concetta K. Vieira

Jane Connell
William Costello
David and Elaine Daniels
Catherine M. DeSantis
Duane and Flora Frank
Robert Garand
Philip M. Mello
Mr. and Mrs. Robert M. Murphy
Newport Rhode Island Police
Relief Fund Association
Russell and Ann Roderick
Mr. and Mrs. Jack Taylor

In Memory of Alda G. Wagner

Donna L. Decker

In Memory of Donald Joseph Wagner

Mr. and Mrs. John M. Bower
Laura R. Burd
Alan and Patricia Cohick
Vic and Mary Engel
Paul and Lois White

In Memory of Robert John Walter

Megan Gaspari
Christa Lauchle
J. C. Lauchle
Garrett T. Walter
Riley N. Walter
Ryan Walter

In Memory of Gladys Waltz

Guy Waltz

In Memory of Clarence**“Clancy” Watkins**

Arnot Sportsmen Club, Inc.
James and Judith Creeley
E. Anita Evans
Colleen Gilorma
Mountain Run Hunting Club
Elizabeth V. Shanley
Jeffery and LaVonna Smith
Steve and Connie Smith
Jerome, June, Joe, Jeff and
Jeannine Wynne

In Memory of William N. Wehler

L. Edward and Janette Wehler
Marilyn D. Wehler
Judy Wirth

In Memory of Faye A. Welshans

Michael and Teresa Ault
The Lovett Family - Michael, Roylee,
Mike, Matt, Meghan, and Marc
Kim Roman

In Memory of John J.**“Jack” Werner Sr.**

John and Kate Werner

In Memory of Donald O.**“Don” Wilkins**

Drew and Christianne Wright and
Family

In Memory of Clarabelle S. Williams

John E. Reidy

In Memory of Martha A. Wilson

Marion V. Wilson

In Memory of Richard K. Winters

Lycoming County Independent
Auto Dealers Association

In Memory of Vicki Lee Johnson Wise

AFSCME Local 941 Clinton County
Michael D. Angelelli
Clinton County Employee
Activity Group
Nicole Martin, Kim Eidson, Angela
Atwood, and Amber Martin
Tara Jo McCloskey
Jeanne T. Monoski
Gwyn A. Patrick
Charles and Sally Sample
Clinton County Probation and
Domestic Relations Offices: Eric
Heverly, Candace Murray, Matt
Selvage, Kim Crossen, Tristan Rock,
Pam Bowes, Colleen Wise, Kelly
Foltz, Jason Foltz, Michael Angelelli,
Gwen Patrick, Tara McCloskey, Dave
Goodwin, and Susanne Shaffer
Clinton County Commissioners Office:
Lynn Neff, Connie Bame,
Angela Black, Amy Dicello,
Michelle Sonnie, Sue Conway, and
Bill Suydam
Clinton County Children and Youth
Social Services: Matthew Allegretto,
Marie Hensel, Cathi Houser,
Debra Mitchell, Gerald Rosamilia,
and Keith Linn

In Memory of Charles Levi**“Bud” Witman**

Mona Fern
Judy and Wolfgang Rast
James and Deborah Wolfe

In Memory of Elizabeth Witman

Judy and Wolfgang Rast

In Memory of Kim Emerson Yaw

Kathy L. Yaw

In Memory of Freda M. Yeagle

Family Practice Center, PC

In Memory of Larry E. “Snake” Young

Linda K. Shultz

In Honor of Connie Baysore
Millville Area School District
Elementary Student Union

In Honor of Brenda L. Bottorf
Katy A. Bottorf

In Honor of Catino Grandchildren
Nicholas and Carol Catino

In Honor of Dr. Ronald E. DiSimone
Harold and Sharon Fogle

In Honor of Sandy Dobson
Edward and Saundra Blackburn

In Honor of Norman L. Dowling
Dorothy E. Dowling

In Honor of Patricia G. Egleston
Sharon and Philip Marconi

In Honor of Joan M. Evans
John and Susan Best

In Honor of Dr. Steven W. Geise
Mr. and Mrs. Stanley Zimmerman

In Honor of Perry Landon
Hannah M. Landon

In Honor of Linda K. Mayers
Gary L. Mayers

In Honor of Bonnie J. Mitcheltree
Susan R. Ulmer & Betty J. Mitcheltree

In Honor of Dr. Alexander Nesbitt
Michele Fry

In Honor of Dr. Pagana & the entire staff of the Breast Health Center
Myra E. Kovalak

In Honor of Dr. Timothy J. Pagana
Betty and Herb Cohick
Bill and Mel Purdy

In Honor of Dr. John H. Persing
Henry and Lois Reeves

In Honor of Dr. Steven B. Pinckney
Jim and Peg Redka

In Honor of Mr. and Mrs. Joseph Reynolds
Mr. and Mrs. Rich and Sandy Adams
Mr. and Mrs. Ed and Linda Alberts
Mr. and Mrs. Keith and June Ashenfelder

Mr. and Mrs. Ron and Patricia Cioffi
Mr. and Mrs. Tim and Deb Day
Mr. and Mrs. Bob and Jan Dulak
Mr. and Mrs. Bob and Ina McCormick
Mr. and Mrs. Ray and Diane McGinnis

Mr. and Mrs. Frank and Cheryl Musheno
Mr. and Mrs. Mike and Lorraine Sedlock

Mr. and Mrs. Bob and Karen Sonntag
Mr. Michael Sonntag
Mr. and Mrs. Larry and Karen Stopper
Mr. and Mrs. Tim and Candice Tate
Mr. and Mrs. Tom and Jan Thaler
Mr. and Mrs. Jim and Cheryl Yoxtheimer

In Honor of Dr. Warren L. Robinson
Mr. and Mrs. James Fetzer

In Honor of Dr. Steven D. Rockoff
William and Brenda Holland

In Honor of Jerry Rossman
Tammy J. Sortman

In Honor of Julie Rowe
Meredith P. Field

In Honor of Jacqueline M. Strosser
Bernard L. Strosser

In Honor of Heather Swimley
Dale and Dotty Ulmer

In Honor of Roy E. Tuller, DO
Virginia M. Kellerman

In Honor of Gale Watts
Millville Area School District
Elementary Student Union

In Honor of Lee and Annie White
Thelma White

In Honor of Steve and Marsha White
Thelma White

In Honor of Eleanor Whiting's 96th Birthday
Bill and Marion Waldeisen

In Honor of Dr. Edward G. Wyshock
Esther J. Karpauitz

In Honor of Linda M. Younes
John and Christine Lauchle
Nellie G. Walter
Steve and Merrie Walter
Todd and Melanie Walter



Serving Up a Smashing Donation

Members of the West Branch Tennis Club donated \$3,200 in proceeds from their third annual Tennis Benefit Luncheon to Susquehanna Health's Kathryn Candor Lundy Breast Health Center. The event was held on October 21, 2011, and featured doubles tennis and lunch.

Pictured left to right are: Laurie Wilson, West Branch Tennis Club Owner/Manager; Kellie Racine, Program and Events Coordinator, West Branch Tennis Club; Pat Egleston, West Branch Tennis Club Member and Breast Cancer Survivor; Laura Sole, RN, BS, Imaging Nurse.



1001 Grampian Blvd. • Williamsport, PA 17701

Return Service Requested

Non-Profit
U.S. Postage
PAID
Williamsport, PA
Permit No. 232

foundation
focus

Life'sTM
Work
800 Nurses. 1 Calling.



Thank a nurse who is special to you!

May 6 to 12
NATIONAL NURSES WEEK

Behind the scenes they comfort you and help provide the best care available. Now it's time to recognize them. Express your gratitude for a nurse or nursing unit with a gift that supports Susquehanna Health's compassionate mission.

You can make a donation in honor of Nurses Week and submit a personalized note for a nurse online at SusquehannaHealth.org/NursesWeek or use the enclosed envelope.

If you would like to contact Susquehanna Health Foundation or wish to opt out of Susquehanna Health fundraising solicitations, please call (570) 320-7460 or 888-322-0945.